

ST. LUCIE COUNTY BOARD OF COUNTY COMMISSIONERS



FY 2022

PAY AND CLASSIFICATION MANUAL



TABLE OF CONTENTS

I. INTRODUCTION

- *Organizational Chart* **3**
- *County Strategic Plan* **4**
- *Vision, Mission, and Core Values* **4**

II. PAY STRUCTURE

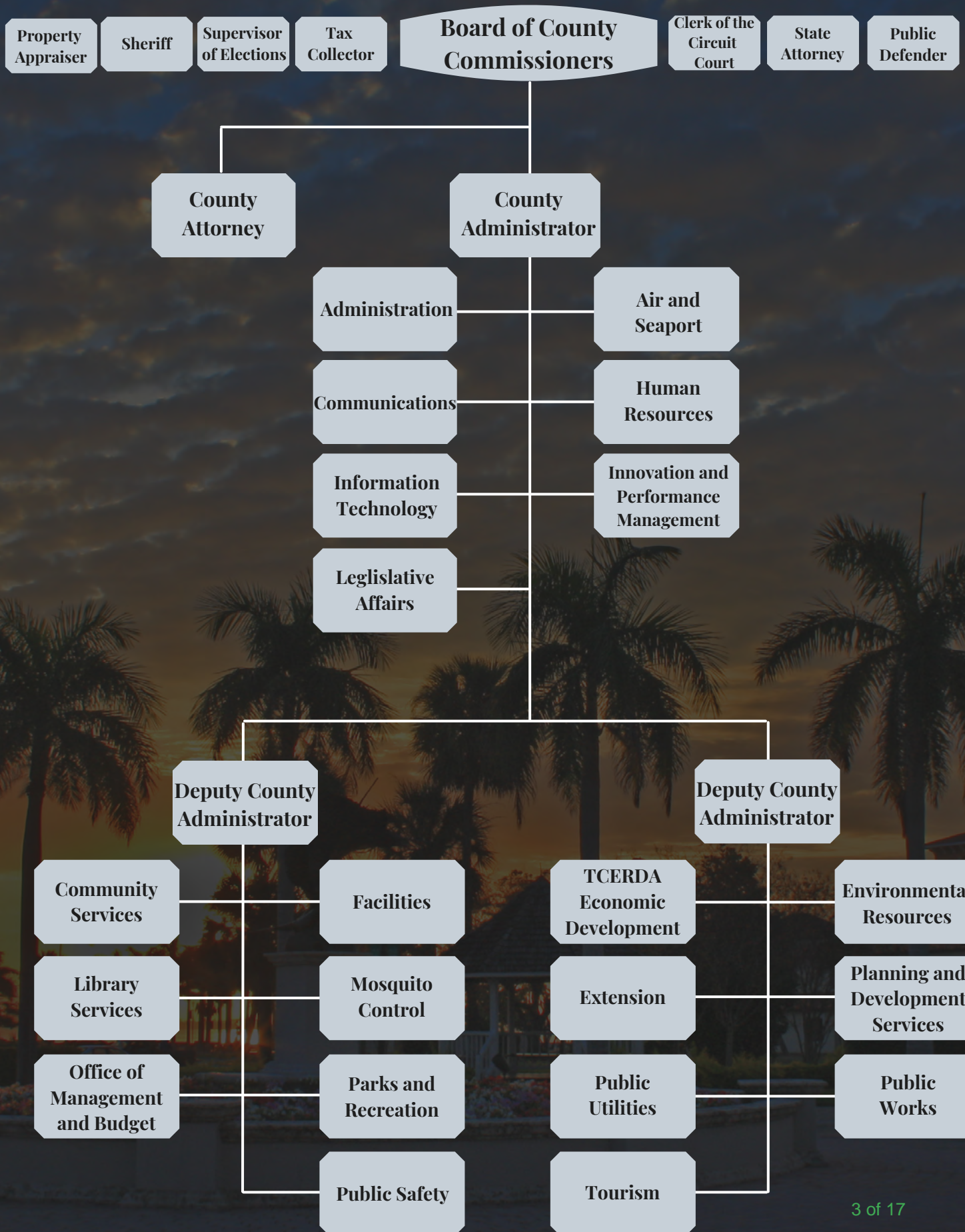
- *Paid Holiday/Observed Holiday Schedule* **5**
- *2022 Bi-Weekly Pay Schedule* **6**
- *FY2022 BOCC Pay Grade Scale* **7**
 - *General Ranges (Non-Union)*
 - *Executive Ranges (EX)*
 - *Union Ranges (Teamsters Local #769)*

III. POSITION MANAGEMENT

- *Full-Time Positions (Title and Pay Grades)* **8**
- *Part-Time Positions (Title and Pay Grades)* **15**

III. HUMAN RESOURCES CONTACT LIST **16**

ST. LUCIE COUNTY CITIZENS



STRATEGIC PLAN



The Strategic Plan’s vision, mission statement, goals, and objectives will guide St. Lucie County over the next few years in its operations and allocation of resources and programs. The strategic plan continues the Board’s commitment to good fiscal stewardship, continued strong commitment to public safety, improving significant infrastructure, facilitating an environment for record economic growth, protecting our environmental resources, collaborating with our municipal, state, and federal partners, and creating a best places to work environment. The adopted Strategic Plan contains five, long-term goals with each goal having between four and six strategic objectives for a total of 22 strategic objectives for all five goals.

St. Lucie County BOCC 2022 Holiday Calendar

*All BOCC employees receive two (2) Floating Holidays each fiscal year.
Floating Holidays must be used between October 1st – September 30th*

New Year's Day 2022 (Observed)	Friday, December 31, 2021
Martin Luther King Jr. Day	Monday, January 17, 2022
Presidents' Day	Monday, February 21, 2022
Memorial Day	Monday, May 30, 2022
Independence Day	Monday, July 4, 2022
Labor Day	Monday, September 5, 2022
Veterans Day	Friday, November 11, 2022
Thanksgiving Day	Thursday, November 24, 2022
Day After Thanksgiving	Friday, November 25, 2022
Christmas Eve (Observed)	Friday, December 23, 2022
Christmas Day (Observed)	Monday, December 26, 2022
New Year's Day 2023 (Observed)	Monday, January 2, 2023

Approved by: _____

Howard N. Tipton, County Administrator





**ST. LUCIE COUNTY BOARD OF COUNTY COMMISSIONERS
2022 BI-WEEKLY PAY SCHEDULE**

PAY PERIOD DATES			PAY #	PAYCHECK DATES		
12/19/2021	-	01/01/2022	01			01/06/2022
01/02/2022	-	01/15/2022	02			01/22/2022
01/16/2022	-	01/29/2022	03			02/03/2022
01/30/2022	-	02/12/2022	04			02/17/2022
02/13/2022	-	02/26/2022	05			03/03/2022
02/27/2022	-	03/12/2022	06			03/17/2022
03/13/2022	-	03/26/2022	07			03/31/2022
03/27/2022	-	04/09/2022	08			04/14/2022
04/10/2022		04/23/2022	09			04/28/2022
04/24/2022	-	05/07/2022	10			05/12/2022
05/08/2022		05/21/2022	11			05/26/2022
05/22/2022	-	06/04/2022	12			06/09/2022
06/05/2022	-	06/18/2022	13			06/23/2022
6/19/2022	-	07/02/2022	14			07/07/2022
07/03/2022	-	07/16/2022	15			07/21/2022
07/17/2022	-	07/30/2022	16			08/04/2022
07/31/2022	-	08/13/2022	17			08/18/2022
08/14/2022	-	08/27/2022	18			09/01/2022
08/28/2022	-	09/10/2022	19			09/16/2022
09/11/2022		09/24/2022	20			09/29/2022
09/25/2022	-	10/08/2022	21			10/13/2022
10/09/2022		10/22/2022	22			10/27/2022
10/23/2022	-	11/05/2022	23			11/10/2022
11/06/2022	-	11/19/2022	24			11/23/2022
11/20/2022	-	12/03/2022	25			12/08/2022
12/04/2022	-	12/17/2022	26			12/22/2022

FY2022 St. Lucie County BOCC Pay Grade Scale

GENERAL RANGES

Salary Grade	FY22 Hourly Minimum	FY22 Annual Minimum		FY22 Hourly Midpoint	FY22 Annual Midpoint		FY22 Hourly Maximum	FY22 Annual Maximum
0	\$10.40	\$21,632.00		\$46.80	\$97,344.00		\$83.20	\$173,056.00
5	\$10.84	\$22,547.20		\$13.86	\$28,828.80		\$16.88	\$35,110.40
6	\$11.44	\$23,795.20		\$14.65	\$30,472.00		\$17.85	\$37,128.00
7	\$12.08	\$25,126.40		\$15.48	\$32,198.40		\$18.87	\$39,249.60
8	\$12.76	\$26,540.80		\$16.36	\$34,028.80		\$19.95	\$41,496.00
9	\$13.48	\$28,038.40		\$17.29	\$35,963.20		\$21.10	\$43,888.00
10	\$14.25	\$29,640.00		\$18.29	\$38,043.20		\$22.32	\$46,425.60
11	\$15.05	\$31,304.00		\$19.33	\$40,206.40		\$23.61	\$49,108.80
12	\$15.91	\$33,092.80		\$20.45	\$42,536.00		\$24.98	\$51,958.40
13	\$16.82	\$34,985.60		\$21.63	\$44,990.40		\$26.44	\$54,995.20
14	\$17.77	\$36,961.60		\$22.88	\$47,590.40		\$27.98	\$58,198.40
15	\$18.79	\$39,083.20		\$24.20	\$50,336.00		\$29.61	\$61,588.80
16	\$19.87	\$41,329.60		\$25.61	\$53,268.80		\$31.34	\$65,187.20
17	\$21.02	\$43,721.60		\$27.10	\$56,368.00		\$33.17	\$68,993.60
18	\$22.24	\$46,259.20		\$28.68	\$59,654.40		\$35.11	\$73,028.80
19	\$23.55	\$48,984.00		\$30.61	\$63,668.80		\$37.66	\$78,332.80
20	\$24.95	\$51,896.00		\$32.44	\$67,475.20		\$39.93	\$83,054.40
21	\$26.45	\$55,016.00		\$34.39	\$71,531.20		\$42.32	\$88,025.60
22	\$28.04	\$58,323.20		\$36.46	\$75,836.80		\$44.87	\$93,329.60
23	\$29.72	\$61,817.60		\$38.64	\$80,371.20		\$47.55	\$98,904.00
24	\$31.50	\$65,520.00		\$40.96	\$85,196.80		\$50.41	\$104,852.80
25	\$33.39	\$69,451.20		\$43.42	\$90,313.60		\$53.44	\$111,155.20
26	\$35.40	\$73,632.00		\$46.02	\$95,721.60		\$56.64	\$117,811.20
27	\$37.52	\$78,041.60		\$48.78	\$101,462.40		\$60.04	\$124,883.20
28	\$39.77	\$82,721.60		\$51.71	\$107,556.80		\$63.64	\$132,371.20
29	\$42.16	\$87,692.80		\$54.81	\$114,004.80		\$67.45	\$140,296.00
30	\$44.69	\$92,955.20		\$58.10	\$120,848.00		\$71.50	\$148,720.00

EXECUTIVE RANGES

EX1	\$36.20	\$75,296.00		\$47.07	\$97,905.60		\$57.93	\$120,494.40
EX2	\$39.83	\$82,846.40		\$51.78	\$107,702.40		\$63.72	\$132,537.60
EX3	\$43.82	\$91,145.60		\$56.96	\$118,476.80		\$70.10	\$145,808.00
EX4	\$48.19	\$100,235.20		\$62.65	\$130,312.00		\$77.11	\$160,388.80
EX5	\$53.01	\$110,260.80		\$68.92	\$143,353.60		\$84.82	\$176,425.60
EX6	\$58.31	\$121,284.80		\$75.81	\$157,684.80		\$93.30	\$194,064.00
EX7	\$64.15	\$133,432.00		\$83.39	\$173,451.20		\$102.63	\$213,470.40
EX8	\$70.55	\$146,744.00		\$91.72	\$190,777.60		\$112.89	\$234,811.20

TEAMSTERS LOCAL #769 RANGES

U05	\$10.60	\$22,048.00		\$13.62	\$28,329.60		\$16.64	\$34,611.20
U06	\$11.13	\$23,150.40		\$14.30	\$29,744.00		\$17.47	\$36,337.60
U07	\$11.69	\$24,315.20		\$15.02	\$31,241.60		\$18.35	\$38,168.00
U08	\$12.27	\$25,521.60		\$15.77	\$32,801.60		\$19.26	\$40,060.80
U09	\$12.89	\$26,811.20		\$16.56	\$34,444.80		\$20.23	\$42,078.40
U10	\$13.53	\$28,142.40		\$17.39	\$36,171.20		\$21.24	\$44,179.20
U11	\$14.21	\$29,556.80		\$18.26	\$37,980.80		\$22.30	\$46,384.00
U12	\$14.91	\$31,012.80		\$19.17	\$39,873.60		\$23.42	\$48,713.60
U13	\$15.66	\$32,572.80		\$20.13	\$41,870.40		\$24.59	\$51,147.20
U14	\$16.44	\$34,195.20		\$21.13	\$43,950.40		\$25.81	\$53,684.80
U15	\$17.26	\$35,900.80		\$22.19	\$46,155.20		\$27.11	\$56,388.80
U16	\$18.13	\$37,710.40		\$23.30	\$48,464.00		\$28.46	\$59,196.80
U17	\$19.03	\$39,582.40		\$24.46	\$50,876.80		\$29.89	\$62,171.20
U18	\$19.99	\$41,579.20		\$25.69	\$53,435.20		\$31.38	\$65,270.40
U19	\$20.99	\$43,659.20		\$26.97	\$56,097.60		\$32.95	\$68,536.00
U20	\$22.04	\$45,843.20		\$28.32	\$58,905.60		\$34.59	\$71,947.20
U21	\$23.14	\$48,131.20		\$29.74	\$61,859.20		\$36.33	\$75,566.40
U22	\$24.29	\$50,523.20		\$31.22	\$64,937.60		\$38.15	\$79,352.00
U23	\$25.51	\$53,060.80		\$32.78	\$68,182.40		\$40.05	\$83,304.00

FULL - TIME POSITIONS BY DEPARTMENT/DIVISION

DEPARTMENT	DIVISION	TITLE	PAY GRADE
AIR AND SEAPORT	SLC INTERNATIONAL AIRPORT	BUDGET AND CONTRACTS COORDINATOR	20
AIR AND SEAPORT	SLC INTERNATIONAL AIRPORT	AIRPORT ASSISTANT MANAGER	25
AIR AND SEAPORT	SLC INTERNATIONAL AIRPORT	AIRPORT MAINTENANCE AND OPERATIONS TECHNICIAN	U15
AIR AND SEAPORT	SLC INTERNATIONAL AIRPORT	AIRPORT MANAGER	27
AIR AND SEAPORT	SLC INTERNATIONAL AIRPORT	AIRPORT OPERATIONS AGENT	U16
AIR AND SEAPORT	SLC INTERNATIONAL AIRPORT	LEAD AIRPORT TECHNICIAN	U18
AIR AND SEAPORT	SLC INTERNATIONAL AIRPORT	SENIOR AIRPORT PROJECT PLANNER	23
DEPARTMENT	DIVISION	TITLE	PAY GRADE
AIR AND SEAPORT	SLC PORT	AIR AND SEAPORT SERVICES SUPPORT COORDINATOR	20
AIR AND SEAPORT	SLC PORT	DIRECTOR OF AIR AND SEAPORT	EX8
DEPARTMENT	DIVISION	TITLE	PAY GRADE
COUNTY ADMINISTRATION	COUNTY ADMINISTRATOR OFFICE	AGENDA COORDINATOR	18
COUNTY ADMINISTRATION	COUNTY ADMINISTRATOR OFFICE	COMMUNITY AND BUSINESS ENGAGEMENT COORDINATOR	23
COUNTY ADMINISTRATION	COUNTY ADMINISTRATOR OFFICE	COUNTY ADMINISTRATOR	EX8
COUNTY ADMINISTRATION	COUNTY ADMINISTRATOR OFFICE	DEPUTY COUNTY ADMINISTRATOR	EX6
COUNTY ADMINISTRATION	COUNTY ADMINISTRATOR OFFICE	EXECUTIVE AIDE TO COUNTY ADMINISTRATOR	22
COUNTY ADMINISTRATION	COUNTY ADMINISTRATOR OFFICE	EXECUTIVE ASSISTANT	17
COUNTY ADMINISTRATION	COUNTY ADMINISTRATOR OFFICE	SENIOR OFFICE OPERATIONS SPECIALIST	18
DEPARTMENT	DIVISION	TITLE	PAY GRADE
COUNTY ADMINISTRATION	LEGISLATIVE AFFAIRS	LEGISLATIVE AFFAIRS DIVISION DIRECTOR	27
COUNTY ADMINISTRATION	LEGISLATIVE AFFAIRS	LEGISLATIVE AFFAIRS GRANTS COORDINATOR	20
DEPARTMENT	DIVISION	TITLE	PAY GRADE
COUNTY ADMINISTRATION	COMMUNICATIONS	COMMUNICATIONS DIVISION DIRECTOR	28
COUNTY ADMINISTRATION	COMMUNICATIONS	COMMUNICATIONS DIVISION MANAGER	25
COUNTY ADMINISTRATION	COMMUNICATIONS	GRAPHIC / DIGITAL CONTENT COORDINATOR	23
COUNTY ADMINISTRATION	COMMUNICATIONS	MEDIA SPECIALIST	18
COUNTY ADMINISTRATION	COMMUNICATIONS	SLCTV COORDINATOR	20
COUNTY ADMINISTRATION	COMMUNICATIONS	WEBMASTER	23
DEPARTMENT	DIVISION	TITLE	PAY GRADE
COUNTY ADMINISTRATION	INNOVATION AND PERFORMANCE MANAGEMENT	IMPACT FEE FISCAL COORDINATOR	20
COUNTY ADMINISTRATION	INNOVATION AND PERFORMANCE MANAGEMENT	IMPACT FEE MANAGER	26
COUNTY ADMINISTRATION	INNOVATION AND PERFORMANCE MANAGEMENT	INNOVATION AND PERFORMANCE DIVISION DIRECTOR	28
COUNTY ADMINISTRATION	INNOVATION AND PERFORMANCE MANAGEMENT	INNOVATION AND PERFORMANCE NAVIGATOR	25
DEPARTMENT	DIVISION	TITLE	PAY GRADE
COUNTY ADMINISTRATION	TC EDUCATION, RESEARCH AND DEVELOPMENT	TC EDUCATION, RESEARCH AND DEVELOPMENT COORDINATOR	23
DEPARTMENT	DIVISION	TITLE	PAY GRADE
COUNTY ADMINISTRATION	TOURIST DEVELOPMENT	DIRECTOR OF TOURISM AND MARKETING	26
COUNTY ADMINISTRATION	TOURIST DEVELOPMENT	SENIOR TOURISM AND MARKETING COORDINATOR	23
COUNTY ADMINISTRATION	TOURIST DEVELOPMENT	TOURISM AND MARKETING COORDINATOR	20
DEPARTMENT	DIVISION	TITLE	PAY GRADE
COUNTY ATTORNEY	COUNTY ATTORNEY'S OFFICE	ACQUISITION AGENT I	20
COUNTY ATTORNEY	COUNTY ATTORNEY'S OFFICE	ASSISTANT COUNTY ATTORNEY II	EX3
COUNTY ATTORNEY	COUNTY ATTORNEY'S OFFICE	ASSISTANT COUNTY ATTORNEY III	EX6
COUNTY ATTORNEY	COUNTY ATTORNEY'S OFFICE	COUNTY ATTORNEY	EX8
COUNTY ATTORNEY	COUNTY ATTORNEY'S OFFICE	LEGAL ASSISTANT I	17
COUNTY ATTORNEY	COUNTY ATTORNEY'S OFFICE	LEGAL ASSISTANT II	18
COUNTY ATTORNEY	COUNTY ATTORNEY'S OFFICE	LEGAL ASSISTANT III	20
COUNTY ATTORNEY	COUNTY ATTORNEY'S OFFICE	PROPERTY ACQUISITION DIVISION DIRECTOR	28
DEPARTMENT	DIVISION	TITLE	PAY GRADE
COUNTY ATTORNEY	CRIMINAL JUSTICE	ANALYST - CJIS	21
COUNTY ATTORNEY	CRIMINAL JUSTICE	CRIMINAL JUSTICE DIRECTOR	28
COUNTY ATTORNEY	CRIMINAL JUSTICE	DRUG LAB MANAGER	23
COUNTY ATTORNEY	CRIMINAL JUSTICE	LABORATORY SPECIALIST	15
COUNTY ATTORNEY	CRIMINAL JUSTICE	PRETRIAL CASE MANAGER	18
COUNTY ATTORNEY	CRIMINAL JUSTICE	PRETRIAL MANAGER	24
COUNTY ATTORNEY	CRIMINAL JUSTICE	PRETRIAL PROGRAM SUPERVISOR	23
COUNTY ATTORNEY	CRIMINAL JUSTICE	PRETRIAL RELEASE OFFICER	19
COUNTY ATTORNEY	CRIMINAL JUSTICE	SENIOR ANALYST - CJIS	22
COUNTY ATTORNEY	CRIMINAL JUSTICE	SENIOR LABORATORY SPECIALIST	16
COUNTY ATTORNEY	CRIMINAL JUSTICE	SENIOR PRETRIAL OFFICER	22
COUNTY ATTORNEY	CRIMINAL JUSTICE	SENIOR STAFF ASSISTANT	14
COUNTY ATTORNEY	CRIMINAL JUSTICE	STAFF ASSISTANT	12
DEPARTMENT	DIVISION	TITLE	PAY GRADE
COMMUNITY SERVICES	HOUSING	HOUSING MANAGER	26
COMMUNITY SERVICES	HOUSING	HOUSING PROGRAM SPECIALIST	18
COMMUNITY SERVICES	HOUSING	HOUSING PROJECT COORDINATOR	23
COMMUNITY SERVICES	HOUSING	SENIOR PROGRAM SPECIALIST	19
DEPARTMENT	DIVISION	TITLE	PAY GRADE
COMMUNITY SERVICES	HUMAN SERVICES	COMMUNITY SERVICES DIRECTOR	EX4
COMMUNITY SERVICES	HUMAN SERVICES	EXECUTIVE ASSISTANT	17
COMMUNITY SERVICES	HUMAN SERVICES	HUMAN SERVICES MANAGER	26
COMMUNITY SERVICES	HUMAN SERVICES	PROGRAM SPECIALIST	16
COMMUNITY SERVICES	HUMAN SERVICES	SENIOR PROGRAM SPECIALIST	19
COMMUNITY SERVICES	HUMAN SERVICES	SENIOR STAFF ASSISTANT	14
COMMUNITY SERVICES	HUMAN SERVICES	SOCIAL SERVICES COORDINATOR	20
COMMUNITY SERVICES	MASS TRANSIT	BUDGET AND CONTRACTS COORDINATOR	20
COMMUNITY SERVICES	MASS TRANSIT	FISCAL AND GRANTS SUPERVISOR	22

FULL - TIME POSITIONS BY DEPARTMENT/DIVISION

DEPARTMENT	DIVISION	TITLE	PAY GRADE
COMMUNITY SERVICES	MASS TRANSIT	SENIOR PROGRAM SPECIALIST	19
COMMUNITY SERVICES	MASS TRANSIT	TRANSIT DIVISON DIRECTOR	28
COMMUNITY SERVICES	MASS TRANSIT	TRANSIT ELIGIBILITY SPECIALIST	17
COMMUNITY SERVICES	MASS TRANSIT	TRANSIT OPERATIONS MANAGER	26
DEPARTMENT	DIVISION	TITLE	PAY GRADE
COMMUNITY SERVICES	VETERAN SERVICES	LICENSED MENTAL HEALTH COUNSELOR	22
COMMUNITY SERVICES	VETERAN SERVICES	OFFICE OPERATIONS SPECIALIST	17
COMMUNITY SERVICES	VETERAN SERVICES	SENIOR STAFF ASSISTANT	14
COMMUNITY SERVICES	VETERAN SERVICES	VETERAN SERVICES MANAGER	26
COMMUNITY SERVICES	VETERAN SERVICES	VETERAN SERVICES OFFICER	14
COMMUNITY SERVICES	VETERAN SERVICES	VETERAN SERVICES OFFICER II	16
COMMUNITY SERVICES	VETERAN SERVICES	VETERAN SERVICES OFFICER III	18
DEPARTMENT	DIVISION	TITLE	PAY GRADE
ENVIRONMENTAL RESOURCES	ADMINISTRATION	BUDGET AND CONTRACTS COORDINATOR	20
ENVIRONMENTAL RESOURCES	ADMINISTRATION	ENVIRONMENTAL RESOURCES DIRECTOR	EX4
ENVIRONMENTAL RESOURCES	ADMINISTRATION	ERD ASSISTANT DIRECTOR	28
ENVIRONMENTAL RESOURCES	ADMINISTRATION	RESILIENCE NAVIGATOR	25
ENVIRONMENTAL RESOURCES	ADMINISTRATION	SENIOR OFFICE OPERATIONS SPECIALIST	18
DEPARTMENT	DIVISION	TITLE	PAY GRADE
ENVIRONMENTAL RESOURCES	ENVIRONMENTAL LANDS	NATURAL RESOURCES MANAGEMENT COORDINATOR	18
ENVIRONMENTAL RESOURCES	ENVIRONMENTAL LANDS	NATURAL RESOURCES MANAGEMENT SPECIALIST I	15
ENVIRONMENTAL RESOURCES	ENVIRONMENTAL LANDS	SENIOR NATURAL RESOURCES FIELD AND OPERATIONS COORDINATOR	23
ENVIRONMENTAL RESOURCES	ENVIRONMENTAL LANDS	SENIOR STRATEGIC PLANNING AND RESTORATION COORDINATOR	23
DEPARTMENT	DIVISION	TITLE	PAY GRADE
ENVIRONMENTAL RESOURCES	ENVIRONMENTAL REGULATIONS	ENVIRONMENTAL PERMITTING AND ZONING COORDINATOR	20
ENVIRONMENTAL RESOURCES	ENVIRONMENTAL REGULATIONS	ENVIRONMENTAL PLANNER	20
ENVIRONMENTAL RESOURCES	ENVIRONMENTAL REGULATIONS	ENVIRONMENTAL REGULATIONS MANAGER	25
ENVIRONMENTAL RESOURCES	ENVIRONMENTAL REGULATIONS	ENVIRONMENTAL REGULATIONS SPECIALIST	18
ENVIRONMENTAL RESOURCES	ENVIRONMENTAL REGULATIONS	SENIOR ENVIRONMENTAL PLANNER	23
DEPARTMENT	DIVISION	TITLE	PAY GRADE
ENVIRONMENTAL RESOURCES	EDUCATION & OUTREACH (OXBOW)	EDUCATION COORDINATOR	20
ENVIRONMENTAL RESOURCES	EDUCATION & OUTREACH (OXBOW)	ENVIRONMENTAL EDUCATION AND COMMUNITY OUTREACH MANAGER	25
ENVIRONMENTAL RESOURCES	EDUCATION & OUTREACH (OXBOW)	ENVIRONMENTAL PROGRAM COORDINATOR	20
ENVIRONMENTAL RESOURCES	EDUCATION & OUTREACH (OXBOW)	SENIOR ENVIRONMENTAL OUTREACH COORDINATOR	22
ENVIRONMENTAL RESOURCES	EDUCATION & OUTREACH (OXBOW)	SENIOR LANDS STEWARDSHIP AND OUTREACH COORDINATOR	22
DEPARTMENT	DIVISION	TITLE	PAY GRADE
FACILITIES	ADMIN BUILDINGS	BUILDING MAINTENANCE LEAD	U17
FACILITIES	ADMIN BUILDINGS	BUILDING MAINTENANCE SUPERINTENDENT	20
FACILITIES	ADMIN BUILDINGS	FACILITIES MANAGER	26
FACILITIES	ADMIN BUILDINGS	HVAC TECHNICIAN I	U16
FACILITIES	ADMIN BUILDINGS	HVAC TECHNICIAN II	U17
FACILITIES	ADMIN BUILDINGS	MAINTENANCE TECHNICIAN III	U14
DEPARTMENT	DIVISION	TITLE	PAY GRADE
FACILITIES	ADMIN CUSTODIAL	CMMS ANALYST	21
FACILITIES	ADMIN CUSTODIAL	CMMS COORDINATOR	20
FACILITIES	ADMIN CUSTODIAL	FACILITIES MANAGER	26
FACILITIES	ADMIN CUSTODIAL	LEAD CUSTODIAN	U10
FACILITIES	ADMIN CUSTODIAL	MAINTENANCE TECHNICIAN I	U12
FACILITIES	ADMIN CUSTODIAL	MAINTENANCE TECHNICIAN III	U14
DEPARTMENT	DIVISION	TITLE	PAY GRADE
FACILITIES	ADMINISTRATION	ARCHITECT	27
FACILITIES	ADMINISTRATION	ENERGY SERVICES ANALYST	21
FACILITIES	ADMINISTRATION	FACILITIES DIRECTOR	EX4
FACILITIES	ADMINISTRATION	FACILITIES MANAGER	26
FACILITIES	ADMINISTRATION	FACILITIES OPERATIONS COORDINATOR	18
FACILITIES	ADMINISTRATION	FACILITIES PROGRAM COORDINATOR	23
FACILITIES	ADMINISTRATION	SENIOR FISCAL ASSISTANT	14
DEPARTMENT	DIVISION	TITLE	PAY GRADE
FACILITIES	COURT FACILITIES	CUSTODIAL MAINTENANCE SUPERINTENDENT	20
FACILITIES	COURT FACILITIES	LEAD CUSTODIAN	U10
DEPARTMENT	DIVISION	TITLE	PAY GRADE
FACILITIES	GENERAL MAINTENANCE	CONSTRUCTION RENOVATION SPECIALIST	U16
FACILITIES	GENERAL MAINTENANCE	FACILITIES PROJECT MANAGER	22
FACILITIES	GENERAL MAINTENANCE	FIELD SERVICES COORDINATOR	20
FACILITIES	GENERAL MAINTENANCE	MASTER ELECTRICIAN	U21
FACILITIES	GENERAL MAINTENANCE	PROJECT COORDINATOR	20
FACILITIES	GENERAL MAINTENANCE	PROJECT MANAGER	22
FACILITIES	GENERAL MAINTENANCE	SENIOR PLUMBER	U19
DEPARTMENT	DIVISION	TITLE	PAY GRADE
FACILITIES	JAIL MAINTENANCE	BUILDING MAINTENANCE FABRICATOR/LOCKSMITH	U17
FACILITIES	JAIL MAINTENANCE	ELECTRICIAN	U18
FACILITIES	JAIL MAINTENANCE	ELECTRONICS TECHNICIAN	U18
FACILITIES	JAIL MAINTENANCE	JAIL MAINTENANCE SPECIALIST	U14
FACILITIES	JAIL MAINTENANCE	JAIL MAINTENANCE SUPERINTENDENT	20
FACILITIES	JAIL MAINTENANCE	SENIOR PLUMBER	U19

FULL - TIME POSITIONS BY DEPARTMENT/DIVISION

DEPARTMENT	DIVISION	TITLE	PAY GRADE
FACILITIES	SERVICE GARAGE	LIGHT FLEET COORDINATOR	23
DEPARTMENT	DIVISION	TITLE	PAY GRADE
HUMAN RESOURCES	HUMAN RESOURCES	HUMAN RESOURCES ANALYST	21
HUMAN RESOURCES	HUMAN RESOURCES	HUMAN RESOURCES AND RISK MANAGEMENT ASSISTANT DIRECTOR	30
HUMAN RESOURCES	HUMAN RESOURCES	HUMAN RESOURCES AND RISK MANAGEMENT DIRECTOR	EX5
HUMAN RESOURCES	HUMAN RESOURCES	HUMAN RESOURCES MANAGER	27
HUMAN RESOURCES	HUMAN RESOURCES	HUMAN RESOURCES SPECIALIST	18
HUMAN RESOURCES	HUMAN RESOURCES	RISK AND ORGANIZATIONAL / EMPLOYEE DEVELOPMENT MANAGER	27
HUMAN RESOURCES	HUMAN RESOURCES	SENIOR HUMAN RESOURCES ANALYST	23
HUMAN RESOURCES	HUMAN RESOURCES	SENIOR OFFICE OPERATIONS SPECIALIST	18
HUMAN RESOURCES	HUMAN RESOURCES	TALENT ACQUISITION COORDINATOR	22
HUMAN RESOURCES	HUMAN RESOURCES	TOTAL REWARDS MANAGER	27
HUMAN RESOURCES	HUMAN RESOURCES	TOTAL REWARDS SPECIALIST	17
HUMAN RESOURCES	HUMAN RESOURCES	TRAINING AND ORGANIZATIONAL/EMPLOYEE DEVELOPMENT SPECIALIST	17
DEPARTMENT	DIVISION	TITLE	PAY GRADE
INFORMATION TECHNOLOGY	INFORMATION TECHNOLOGY	ANALYST	21
INFORMATION TECHNOLOGY	INFORMATION TECHNOLOGY	ANALYST SUPERVISOR	23
INFORMATION TECHNOLOGY	INFORMATION TECHNOLOGY	ASSISTANT INFORMATION TECHNOLOGY DIRECTOR	30
INFORMATION TECHNOLOGY	INFORMATION TECHNOLOGY	ASSISTANT INFORMATION TECHNOLOGY MANAGER	24
INFORMATION TECHNOLOGY	INFORMATION TECHNOLOGY	BUDGET AND CONTRACTS COORDINATOR	20
INFORMATION TECHNOLOGY	INFORMATION TECHNOLOGY	CHIEF INFORMATION OFFICER	EX8
INFORMATION TECHNOLOGY	INFORMATION TECHNOLOGY	CUSTOMER SERVICE LIAISON	15
INFORMATION TECHNOLOGY	INFORMATION TECHNOLOGY	DATA SYSTEMS COORDINATOR	23
INFORMATION TECHNOLOGY	INFORMATION TECHNOLOGY	EOC DESKTOP TECHNICIAN	20
INFORMATION TECHNOLOGY	INFORMATION TECHNOLOGY	EXECUTIVE ASSISTANT	17
INFORMATION TECHNOLOGY	INFORMATION TECHNOLOGY	INFORMATION TECHNOLOGY APPLICATION MANAGER	24
INFORMATION TECHNOLOGY	INFORMATION TECHNOLOGY	INFORMATION TECHNOLOGY DIVISION MANAGER	25
INFORMATION TECHNOLOGY	INFORMATION TECHNOLOGY	INFORMATION TECHNOLOGY HELP DESK SUPERVISOR	23
INFORMATION TECHNOLOGY	INFORMATION TECHNOLOGY	INFORMATION TECHNOLOGY PROJECT MANAGEMENT OFFICE COORDINATOR	23
INFORMATION TECHNOLOGY	INFORMATION TECHNOLOGY	NETWORK ADMINISTRATOR	22
INFORMATION TECHNOLOGY	INFORMATION TECHNOLOGY	NETWORK DESKTOP TECHNICIAN	20
INFORMATION TECHNOLOGY	INFORMATION TECHNOLOGY	OPERATIONS SECTION SUPERVISOR	23
INFORMATION TECHNOLOGY	INFORMATION TECHNOLOGY	SECURITY ADMINISTRATOR	23
INFORMATION TECHNOLOGY	INFORMATION TECHNOLOGY	SENIOR ANALYST	22
INFORMATION TECHNOLOGY	INFORMATION TECHNOLOGY	SENIOR CUSTOMER SERVICE LIAISON	19
INFORMATION TECHNOLOGY	INFORMATION TECHNOLOGY	SENIOR NETWORK ADMINISTRATOR	23
INFORMATION TECHNOLOGY	INFORMATION TECHNOLOGY	SENIOR TELECOM ANALYST	22
INFORMATION TECHNOLOGY	INFORMATION TECHNOLOGY	TELECOM ANALYST	21
DEPARTMENT	DIVISION	TITLE	PAY GRADE
LIBRARY SERVICES	LIBRARY SERVICES	BUDGET AND CONTRACTS COORDINATOR	20
LIBRARY SERVICES	LIBRARY SERVICES	FISCAL ASSISTANT	13
LIBRARY SERVICES	LIBRARY SERVICES	LIBRARIAN	20
LIBRARY SERVICES	LIBRARY SERVICES	LIBRARY INFORMATION SYSTEMS COORDINATOR	20
LIBRARY SERVICES	LIBRARY SERVICES	LIBRARY SERVICES DIRECTOR	EX4
LIBRARY SERVICES	LIBRARY SERVICES	LIBRARY SERVICES DIVISION MANAGER	25
LIBRARY SERVICES	LIBRARY SERVICES	PROGRAM ASSISTANT	12
LIBRARY SERVICES	LIBRARY SERVICES	PROGRAM ASSOCIATE	10
LIBRARY SERVICES	LIBRARY SERVICES	PROGRAM CLERK	9
LIBRARY SERVICES	LIBRARY SERVICES	PROGRAM SPECIALIST	16
LIBRARY SERVICES	LIBRARY SERVICES	SENIOR LIBRARIAN	22
LIBRARY SERVICES	LIBRARY SERVICES	SENIOR PROGRAM ASSISTANT	14
LIBRARY SERVICES	LIBRARY SERVICES	SENIOR PROGRAM SPECIALIST	19
LIBRARY SERVICES	LIBRARY SERVICES	SENIOR TECHNICAL ASSISTANT	14
LIBRARY SERVICES	LIBRARY SERVICES	TECHNICAL ASSISTANT	12
LIBRARY SERVICES	LIBRARY SERVICES	TECHNICAL SPECIALIST	17
DEPARTMENT	DIVISION	TITLE	PAY GRADE
OFFICE OF MANAGEMENT & BUDGET	OFFICE OF MANAGEMENT & BUDGET	BUDGET MANAGER	27
OFFICE OF MANAGEMENT & BUDGET	OFFICE OF MANAGEMENT & BUDGET	MANAGEMENT AND BUDGET DIRECTOR	EX5
OFFICE OF MANAGEMENT & BUDGET	OFFICE OF MANAGEMENT & BUDGET	MANAGEMENT ANALYST	23
OFFICE OF MANAGEMENT & BUDGET	OFFICE OF MANAGEMENT & BUDGET	SENIOR MANAGEMENT ANALYST	25
OFFICE OF MANAGEMENT & BUDGET	OFFICE OF MANAGEMENT & BUDGET	SR. OFFICE OPERATIONS SPECIALIST	18
DEPARTMENT	DIVISION	TITLE	PAY GRADE
OFFICE OF MANAGEMENT & BUDGET	PURCHASING DEPARTMENT	CONTRACTS COORDINATOR	20
OFFICE OF MANAGEMENT & BUDGET	PURCHASING DEPARTMENT	MATERIAL CENTER TECHNICIAN	13
OFFICE OF MANAGEMENT & BUDGET	PURCHASING DEPARTMENT	PURCHASING MANAGER	27
OFFICE OF MANAGEMENT & BUDGET	PURCHASING DEPARTMENT	SENIOR STAFF ASSISTANT	14
DEPARTMENT	DIVISION	TITLE	PAY GRADE
MOSQUITO CONTROL	ADMINISTRATION	BUDGET AND CONTRACTS COORDINATOR	20
MOSQUITO CONTROL	ADMINISTRATION	EXECUTIVE ASSISTANT	17
MOSQUITO CONTROL	ADMINISTRATION	MOSQUITO CONTROL ASSISTANT DIRECTOR	28
MOSQUITO CONTROL	ADMINISTRATION	MOSQUITO CONTROL DIRECTOR	EX4
MOSQUITO CONTROL	ADMINISTRATION	MOSQUITO CONTROL MANAGER	26
DEPARTMENT	DIVISION	TITLE	PAY GRADE
MOSQUITO CONTROL	IMPOUNDMENT OPERATIONS	FIELD EQUIPMENT OPERATOR I	U13
MOSQUITO CONTROL	IMPOUNDMENT OPERATIONS	FIELD EQUIPMENT OPERATOR II	U14
MOSQUITO CONTROL	IMPOUNDMENT OPERATIONS	IMPOUNDMENT CREW LEADER	U17
MOSQUITO CONTROL	IMPOUNDMENT OPERATIONS	IMPOUNDMENT OPERATOR	U14
MOSQUITO CONTROL	IMPOUNDMENT OPERATIONS	IMPOUNDMENT SUPERVISOR	20
MOSQUITO CONTROL	IMPOUNDMENT OPERATIONS	SENIOR IMPOUNDMENT OPERATOR	U15

FULL - TIME POSITIONS BY DEPARTMENT/DIVISION

DEPARTMENT	DIVISION	TITLE	PAY GRADE
MOSQUITO CONTROL	INSPECTION DIVISION	ENTOMOLOGICAL INSPECTOR I	U11
MOSQUITO CONTROL	INSPECTION DIVISION	ENTOMOLOGICAL INSPECTOR II	U12
MOSQUITO CONTROL	INSPECTION DIVISION	ENTOMOLOGICAL INSPECTOR III	U17
MOSQUITO CONTROL	INSPECTION DIVISION	INSPECTION CREW LEADER	U18
MOSQUITO CONTROL	INSPECTION DIVISION	SURVEILLANCE SPECIALIST	U14
DEPARTMENT	DIVISION	TITLE	PAY GRADE
PARKS AND RECREATION	ADMINISTRATION	ADMINISTRATIVE OPERATIONS COORDINATOR	23
PARKS AND RECREATION	ADMINISTRATION	PARKS AND RECREATION ASSISTANT DIRECTOR	30
PARKS AND RECREATION	ADMINISTRATION	PARKS AND RECREATION DIRECTOR	EX4
PARKS AND RECREATION	ADMINISTRATION	SENIOR OFFICE OPERATIONS SPECIALIST	18
PARKS AND RECREATION	ADMINISTRATION	STAFF ASSISTANT	12
DEPARTMENT	DIVISION	TITLE	PAY GRADE
PARKS AND RECREATION	PARKS AND SPECIAL FACILITIES	AQUATICS AND SAFETY COORDINATOR	19
PARKS AND RECREATION	PARKS AND SPECIAL FACILITIES	AQUATICS PROGRAM SUPERVISOR	15
PARKS AND RECREATION	PARKS AND SPECIAL FACILITIES	CAMPGROUND SPECIALIST	18
PARKS AND RECREATION	PARKS AND SPECIAL FACILITIES	CREW LEADER	U16
PARKS AND RECREATION	PARKS AND SPECIAL FACILITIES	EVENT SPECIALIST	18
PARKS AND RECREATION	PARKS AND SPECIAL FACILITIES	HEAVY EQUIPMENT OPERATOR II	U14
PARKS AND RECREATION	PARKS AND SPECIAL FACILITIES	MAINTENANCE TECHNICIAN I	U12
PARKS AND RECREATION	PARKS AND SPECIAL FACILITIES	MAINTENANCE TECHNICIAN II	U13
PARKS AND RECREATION	PARKS AND SPECIAL FACILITIES	MAINTENANCE TECHNICIAN III	U14
PARKS AND RECREATION	PARKS AND SPECIAL FACILITIES	MASTER ELECTRICIAN	U21
PARKS AND RECREATION	PARKS AND SPECIAL FACILITIES	OFFICE OPERATIONS SPECIALIST	17
PARKS AND RECREATION	PARKS AND SPECIAL FACILITIES	PARKS AND SPECIAL FACILITIES DIVISION MANAGER	26
PARKS AND RECREATION	PARKS AND SPECIAL FACILITIES	PARKS GROUNDS ASSISTANT SUPERINTENDENT	18
PARKS AND RECREATION	PARKS AND SPECIAL FACILITIES	PARKS GROUNDS SUPERINTENDENT	23
PARKS AND RECREATION	PARKS AND SPECIAL FACILITIES	PROGRAM ASSISTANT	12
PARKS AND RECREATION	PARKS AND SPECIAL FACILITIES	PROGRAM SPECIALIST	16
PARKS AND RECREATION	PARKS AND SPECIAL FACILITIES	SENIOR PLUMBER	U19
PARKS AND RECREATION	PARKS AND SPECIAL FACILITIES	SPRAY TECHNICIAN	U13
PARKS AND RECREATION	PARKS AND SPECIAL FACILITIES	TRADES AND PROJECTS SUPERINTENDENT	23
PARKS AND RECREATION	PARKS AND SPECIAL FACILITIES	VENUE COORDINATOR	21
DEPARTMENT	DIVISION	TITLE	PAY GRADE
PARKS AND RECREATION	CLUBHOUSE / PRO SHOP	ASSISTANT GOLF PROFESSIONAL II	14
PARKS AND RECREATION	CLUBHOUSE / PRO SHOP	GOLF COURSE MANAGER	26
PARKS AND RECREATION	CLUBHOUSE / PRO SHOP	HEAD GOLF PROFESSIONAL	17
PARKS AND RECREATION	CLUBHOUSE / PRO SHOP	PRO SHOP ATTENDANT	7
DEPARTMENT	DIVISION	TITLE	PAY GRADE
PARKS AND RECREATION	REGIONAL PARKS AND STADIUMS	ATHLETIC FIELDS SUPERINTENDENT	24
PARKS AND RECREATION	REGIONAL PARKS AND STADIUMS	ATHLETIC GROUNDSKEEPER	19
PARKS AND RECREATION	REGIONAL PARKS AND STADIUMS	COMMUNITY CENTER COORDINATOR	20
PARKS AND RECREATION	REGIONAL PARKS AND STADIUMS	CREW LEADER	U16
PARKS AND RECREATION	REGIONAL PARKS AND STADIUMS	MAINTENANCE MECHANIC	U17
PARKS AND RECREATION	REGIONAL PARKS AND STADIUMS	MAINTENANCE TECHNICIAN I	U12
PARKS AND RECREATION	REGIONAL PARKS AND STADIUMS	MAINTENANCE TECHNICIAN II	U13
PARKS AND RECREATION	REGIONAL PARKS AND STADIUMS	MAINTENANCE TECHNICIAN III	U14
PARKS AND RECREATION	REGIONAL PARKS AND STADIUMS	OFFICE OPERATIONS SPECIALIST	17
PARKS AND RECREATION	REGIONAL PARKS AND STADIUMS	RECREATION COORDINATOR	20
PARKS AND RECREATION	REGIONAL PARKS AND STADIUMS	RECREATION SUPERVISOR III	14
PARKS AND RECREATION	REGIONAL PARKS AND STADIUMS	REGIONAL PARKS AND STADIUM DIVISION DIRECTOR	28
PARKS AND RECREATION	REGIONAL PARKS AND STADIUMS	REGIONAL PARKS ASSISTANT SUPERINTENDENT	18
PARKS AND RECREATION	REGIONAL PARKS AND STADIUMS	SPRAY TECHNICIAN	U13
PARKS AND RECREATION	REGIONAL PARKS AND STADIUMS	STAFF ASSISTANT	12
PARKS AND RECREATION	REGIONAL PARKS AND STADIUMS	STADIUM MANAGER	26
PARKS AND RECREATION	REGIONAL PARKS AND STADIUMS	STADIUM SUPERINTENDENT	25
DEPARTMENT	DIVISION	TITLE	PAY GRADE
PLANNING AND DEVELOPMENT SERVICES	ADMINISTRATION	BUDGET AND CONTRACTS COORDINATOR	20
PLANNING AND DEVELOPMENT SERVICES	ADMINISTRATION	BUSINESS NAVIGATOR	25
PLANNING AND DEVELOPMENT SERVICES	ADMINISTRATION	PLANNING AND DEVELOPMENT SERVICES ASSISTANT DIRECTOR	28
PLANNING AND DEVELOPMENT SERVICES	ADMINISTRATION	PLANNING AND DEVELOPMENT SERVICES DIRECTOR	EX5
PLANNING AND DEVELOPMENT SERVICES	ADMINISTRATION	TRANSPORTATION PLANNER	25
DEPARTMENT	DIVISION	TITLE	PAY GRADE
PLANNING AND DEVELOPMENT SERVICES	BUILDING AND CODE REGULATION	ASSISTANT BUILDING OFFICIAL	25
PLANNING AND DEVELOPMENT SERVICES	BUILDING AND CODE REGULATION	BUILDING AND CODE REGULATION MANAGER	27
PLANNING AND DEVELOPMENT SERVICES	BUILDING AND CODE REGULATION	BUILDING CODE SUPERVISOR / BUILDING OFFICIAL	26
PLANNING AND DEVELOPMENT SERVICES	BUILDING AND CODE REGULATION	BUILDING INSPECTOR	23
PLANNING AND DEVELOPMENT SERVICES	BUILDING AND CODE REGULATION	CHIEF BUILDING INSPECTOR	24
PLANNING AND DEVELOPMENT SERVICES	BUILDING AND CODE REGULATION	CHIEF PLANS EXAMINER	24
PLANNING AND DEVELOPMENT SERVICES	BUILDING AND CODE REGULATION	CODE ENFORCEMENT OFFICER	17
PLANNING AND DEVELOPMENT SERVICES	BUILDING AND CODE REGULATION	CODE ENFORCEMENT SUPERVISOR	20
PLANNING AND DEVELOPMENT SERVICES	BUILDING AND CODE REGULATION	CONTRACTING LICENSE INVESTIGATOR	18
PLANNING AND DEVELOPMENT SERVICES	BUILDING AND CODE REGULATION	LICENSING INVESTIGATOR	17
PLANNING AND DEVELOPMENT SERVICES	BUILDING AND CODE REGULATION	PERMIT TECHNICIAN II	16
PLANNING AND DEVELOPMENT SERVICES	BUILDING AND CODE REGULATION	PERMITTING TECHNICIAN	15
PLANNING AND DEVELOPMENT SERVICES	BUILDING AND CODE REGULATION	PLANS EXAMINER	23
PLANNING AND DEVELOPMENT SERVICES	BUILDING AND CODE REGULATION	SENIOR CODE ENFORCEMENT OFFICER	18
PLANNING AND DEVELOPMENT SERVICES	BUILDING AND CODE REGULATION	SENIOR STAFF ASSISTANT	14
PLANNING AND DEVELOPMENT SERVICES	BUILDING AND CODE REGULATION	ZONING AND PERMITTING SUPERVISOR	20
PLANNING AND DEVELOPMENT SERVICES	BUILDING AND CODE REGULATION	ZONING SPECIALIST	17
PLANNING AND DEVELOPMENT SERVICES	BUILDING AND CODE REGULATION	ZONING TECHNICIAN	15

FULL - TIME POSITIONS BY DEPARTMENT/DIVISION

DEPARTMENT	DIVISION	TITLE	PAY GRADE
PLANNING AND DEVELOPMENT SERVICES	GROWTH MANAGEMENT	ASSISTANT PLANNING MANAGER	25
PLANNING AND DEVELOPMENT SERVICES	GROWTH MANAGEMENT	ASSOCIATE PLANNER	19
PLANNING AND DEVELOPMENT SERVICES	GROWTH MANAGEMENT	GIS ANALYST	21
PLANNING AND DEVELOPMENT SERVICES	GROWTH MANAGEMENT	GIS MANAGER	27
PLANNING AND DEVELOPMENT SERVICES	GROWTH MANAGEMENT	GIS SENIOR ANALYST	23
PLANNING AND DEVELOPMENT SERVICES	GROWTH MANAGEMENT	GIS TECHNICIAN	19
PLANNING AND DEVELOPMENT SERVICES	GROWTH MANAGEMENT	OFFICE OPERATIONS SPECIALIST	17
PLANNING AND DEVELOPMENT SERVICES	GROWTH MANAGEMENT	PLANNER I	20
PLANNING AND DEVELOPMENT SERVICES	GROWTH MANAGEMENT	PLANNER II	21
PLANNING AND DEVELOPMENT SERVICES	GROWTH MANAGEMENT	PLANNING COMPLIANCE SPECIALIST	19
PLANNING AND DEVELOPMENT SERVICES	GROWTH MANAGEMENT	PLANNING MANAGER	27
PLANNING AND DEVELOPMENT SERVICES	GROWTH MANAGEMENT	PLANNING TECHNICIAN	15
PLANNING AND DEVELOPMENT SERVICES	GROWTH MANAGEMENT	SENIOR PLANNER	23
PLANNING AND DEVELOPMENT SERVICES	GROWTH MANAGEMENT	SENIOR STAFF ASSISTANT	14
DEPARTMENT	DIVISION	TITLE	PAY GRADE
PUBLIC SAFETY	ANIMAL SAFETY	ANIMAL SAFETY COORDINATOR	20
PUBLIC SAFETY	ANIMAL SAFETY	ANIMAL SAFETY OFFICER	U13
PUBLIC SAFETY	ANIMAL SAFETY	SENIOR OFFICE ASSISTANT - ANIMAL SHELTER	11
DEPARTMENT	DIVISION	TITLE	PAY GRADE
PUBLIC SAFETY	EMERGENCY MANAGEMENT	EMERGENCY MANAGEMENT SAFETY PLANNER	23
PUBLIC SAFETY	EMERGENCY MANAGEMENT	EMERGENCY OPERATIONS MANAGER	26
PUBLIC SAFETY	EMERGENCY MANAGEMENT	MAINTENANCE SPECIALIST	U16
PUBLIC SAFETY	EMERGENCY MANAGEMENT	SENIOR PROGRAM SPECIALIST - EMERGENCY MANAGEMENT	19
PUBLIC SAFETY	EMERGENCY MANAGEMENT	SENIOR PROGRAM SPECIALIST - RECOVERY	19
PUBLIC SAFETY	EMERGENCY MANAGEMENT	SENIOR STAFF ASSISTANT	14
DEPARTMENT	DIVISION	TITLE	PAY GRADE
PUBLIC SAFETY	MARINE SAFETY	OCEAN RESCUE CHIEF	21
PUBLIC SAFETY	MARINE SAFETY	OCEAN RESCUE LIEUTENANT	19
PUBLIC SAFETY	MARINE SAFETY	OCEAN RESCUE LIFEGUARD	U17
DEPARTMENT	DIVISION	TITLE	PAY GRADE
PUBLIC SAFETY	PUBLIC SAFETY AND COMMUNICATIONS	BUDGET AND CONTRACTS COORDINATOR	20
PUBLIC SAFETY	PUBLIC SAFETY AND COMMUNICATIONS	EVIDENCE TECHNICIAN	13
PUBLIC SAFETY	PUBLIC SAFETY AND COMMUNICATIONS	INFORMATION SYSTEMS COORDINATOR	23
PUBLIC SAFETY	PUBLIC SAFETY AND COMMUNICATIONS	PUBLIC SAFETY ANALYST	21
PUBLIC SAFETY	PUBLIC SAFETY AND COMMUNICATIONS	PUBLIC SAFETY ASSISTANT DIRECTOR	28
PUBLIC SAFETY	PUBLIC SAFETY AND COMMUNICATIONS	PUBLIC SAFETY COMMUNICATIONS ASSISTANT SUPERVISOR	18
PUBLIC SAFETY	PUBLIC SAFETY AND COMMUNICATIONS	PUBLIC SAFETY COMMUNICATIONS MANAGER	23
PUBLIC SAFETY	PUBLIC SAFETY AND COMMUNICATIONS	PUBLIC SAFETY COMMUNICATIONS OFFICER I	14
PUBLIC SAFETY	PUBLIC SAFETY AND COMMUNICATIONS	PUBLIC SAFETY COMMUNICATIONS OFFICER II	16
PUBLIC SAFETY	PUBLIC SAFETY AND COMMUNICATIONS	PUBLIC SAFETY COMMUNICATIONS SUPERVISOR	20
PUBLIC SAFETY	PUBLIC SAFETY AND COMMUNICATIONS	PUBLIC SAFETY DIRECTOR	EX5
PUBLIC SAFETY	PUBLIC SAFETY AND COMMUNICATIONS	SENIOR PUBLIC SAFETY COMMUNICATIONS MANAGER	26
DEPARTMENT	DIVISION	TITLE	PAY GRADE
PUBLIC SAFETY	R A D PLAN MAINTENANCE	RADIOLOGICAL COORDINATOR	18
PUBLIC SAFETY	R A D PLAN MAINTENANCE	SENIOR RADIOLOGICAL COORDINATOR	20
DEPARTMENT	DIVISION	TITLE	PAY GRADE
PUBLIC UTILITIES	SOLID WASTE	ASSISTANT DIRECTOR OF PUBLIC UTILITIES	30
PUBLIC UTILITIES	SOLID WASTE	ASSISTANT MAINTENANCE MANAGER	23
PUBLIC UTILITIES	SOLID WASTE	FISCAL ASSISTANT	13
PUBLIC UTILITIES	SOLID WASTE	HAZARDOUS WASTE AND COMPLIANCE PROGRAM MANAGER	24
PUBLIC UTILITIES	SOLID WASTE	HOUSEHOLD HAZARDOUS WASTE SPECIALIST	U17
PUBLIC UTILITIES	SOLID WASTE	INTEGRATED WASTE MANAGEMENT COORDINATOR	22
PUBLIC UTILITIES	SOLID WASTE	INTEGRATED WASTE MANAGEMENT CREW LEADER	U17
PUBLIC UTILITIES	SOLID WASTE	INTEGRATED WASTE MANAGEMENT SUPERVISOR	20
PUBLIC UTILITIES	SOLID WASTE	INVENTORY/PARTS SPECIALIST	U16
PUBLIC UTILITIES	SOLID WASTE	LEAD BAILER OPERATOR	U16
PUBLIC UTILITIES	SOLID WASTE	LEAD MATERIALS RECOVERY FACILITATOR	U16
PUBLIC UTILITIES	SOLID WASTE	LEAD SOLID WASTE INDUSTRIAL MECHANIC	U20
PUBLIC UTILITIES	SOLID WASTE	MATERIALS RECOVERY FACILITATOR	U15
PUBLIC UTILITIES	SOLID WASTE	PUBLIC UTILITIES IT PROGRAMS ANALYST	22
PUBLIC UTILITIES	SOLID WASTE	PUBLIC UTILITIES DIRECTOR	EX5
PUBLIC UTILITIES	SOLID WASTE	SCALE OPERATIONS COORDINATOR	20
PUBLIC UTILITIES	SOLID WASTE	SCALEHOUSE SUPERVISOR	19
PUBLIC UTILITIES	SOLID WASTE	SENIOR BALER TECHNICIAN	U19
PUBLIC UTILITIES	SOLID WASTE	SENIOR SOLID WASTE RECYCLING TECHNICIAN	U10
PUBLIC UTILITIES	SOLID WASTE	SENIOR STAFF ASSISTANT	14
PUBLIC UTILITIES	SOLID WASTE	SINGLE STREAM RECYCLING CREW LEADER	U17
PUBLIC UTILITIES	SOLID WASTE	SOLID WASTE ADMINISTRATIVE MANAGER	26
PUBLIC UTILITIES	SOLID WASTE	SOLID WASTE ASSISTANT MANAGER	23
PUBLIC UTILITIES	SOLID WASTE	SOLID WASTE CUSTOMER OUTREACH COORDINATOR	20
PUBLIC UTILITIES	SOLID WASTE	SOLID WASTE DIVISION DIRECTOR	28
PUBLIC UTILITIES	SOLID WASTE	SOLID WASTE HEAVY EQUIPMENT OPERATOR	U16
PUBLIC UTILITIES	SOLID WASTE	SOLID WASTE INDUSTRIAL ELECTRICIAN / MECHANIC	U19
PUBLIC UTILITIES	SOLID WASTE	SOLID WASTE INDUSTRIAL MECHANIC	U16
PUBLIC UTILITIES	SOLID WASTE	SOLID WASTE INDUSTRIAL MECHANIC II	U18
PUBLIC UTILITIES	SOLID WASTE	SOLID WASTE INDUSTRIAL WELDER/MECHANIC	U19
PUBLIC UTILITIES	SOLID WASTE	SOLID WASTE MAINTENANCE SPECIALIST	U16
PUBLIC UTILITIES	SOLID WASTE	SOLID WASTE MAINTENANCE TECHNICIAN II	U13
PUBLIC UTILITIES	SOLID WASTE	SOLID WASTE MARKETING AND QUALITY CONTROL COORDINATOR	22
PUBLIC UTILITIES	SOLID WASTE	SOLID WASTE MATERIAL HANDLER	U9
PUBLIC UTILITIES	SOLID WASTE	SOLID WASTE SENIOR OFFICE OPERATIONS COORDINATOR	23
PUBLIC UTILITIES	SOLID WASTE	UTILITY BILLING SPECIALIST - SOLID WASTE	14

FULL - TIME POSITIONS BY DEPARTMENT/DIVISION

DEPARTMENT	DIVISION	TITLE	PAY GRADE
PUBLIC UTILITIES	ADMINISTRATION	ADMIN AND CUSTOMER SUPPORT ASSISTANT MANAGER	24
PUBLIC UTILITIES	ADMINISTRATION	ADMIN AND CUSTOMER SUPPORT DIVISION MANAGER	26
PUBLIC UTILITIES	ADMINISTRATION	FIELD OPERATIONS COORDINATOR	20
PUBLIC UTILITIES	ADMINISTRATION	FIELD OPERATIONS PROJECT MANAGER	22
PUBLIC UTILITIES	ADMINISTRATION	FIELD OPERATIONS TECHNICIAN	18
PUBLIC UTILITIES	ADMINISTRATION	PUBLIC UTILITIES MARKETING AND COMPLIANCE RELATIONS COORDINATOR	20
PUBLIC UTILITIES	ADMINISTRATION	SENIOR PUBLIC UTILITIES ANALYST	23
PUBLIC UTILITIES	ADMINISTRATION	SENIOR UTILITY BILLING SPECIALIST	16
PUBLIC UTILITIES	ADMINISTRATION	UTILITIES DIVISION DIRECTOR	28
PUBLIC UTILITIES	ADMINISTRATION	UTILITIES PROJECT AND CONSTRUCTION MANAGER	27
PUBLIC UTILITIES	ADMINISTRATION	UTILITY BILLING COORDINATOR	20
PUBLIC UTILITIES	ADMINISTRATION	UTILITY BILLING SPECIALIST	14
PUBLIC UTILITIES	ADMINISTRATION	UTILITY FIELD OPERATIONS MGR	25
PUBLIC UTILITIES	ADMINISTRATION	UTILITY SENIOR FISCAL ASSISTANT	18
DEPARTMENT	DIVISION	TITLE	PAY GRADE
PUBLIC UTILITIES	WATER AND SEWER SERVICES	SOLID WASTE LEAD PLANT OPERATOR	U23
PUBLIC UTILITIES	WATER AND SEWER SERVICES	SOLID WASTE PLANT OPERATOR	U21
PUBLIC UTILITIES	WATER AND SEWER SERVICES	SOLID WASTE PLANT OPERATOR TRAINEE	U19
PUBLIC UTILITIES	WATER AND SEWER SERVICES	UTILITY COORDINATOR	20
PUBLIC UTILITIES	WATER AND SEWER SERVICES	UTILITY TECHNICIAN I	U17
PUBLIC UTILITIES	WATER AND SEWER SERVICES	UTILITY TECHNICIAN II	U20
DEPARTMENT	DIVISION	TITLE	PAY GRADE
PUBLIC WORKS	ADMINISTRATION	BUDGET AND CONTRACTS COORDINATOR	20
PUBLIC WORKS	ADMINISTRATION	COASTAL RESOURCES COORDINATOR	20
PUBLIC WORKS	ADMINISTRATION	PUBLIC WORKS ASSISTANT DIRECTOR	30
PUBLIC WORKS	ADMINISTRATION	PUBLIC WORKS DIRECTOR	EX5
PUBLIC WORKS	ADMINISTRATION	SENIOR OFFICE OPERATIONS SPECIALIST	18
DEPARTMENT	DIVISION	TITLE	PAY GRADE
PUBLIC WORKS	ENGINEERING	ASSISTANT COUNTY ENGINEER	27
PUBLIC WORKS	ENGINEERING	CAPITAL PROJECTS ENGINEER	26
PUBLIC WORKS	ENGINEERING	CIVIL ENGINEER	25
PUBLIC WORKS	ENGINEERING	CONSTRUCTION INSPECTOR II	17
PUBLIC WORKS	ENGINEERING	CONSTRUCTION INSPECTOR III	18
PUBLIC WORKS	ENGINEERING	CONSTRUCTION INSPECTOR IV	19
PUBLIC WORKS	ENGINEERING	COUNTY ENGINEER	29
PUBLIC WORKS	ENGINEERING	COUNTY SURVEYOR	26
PUBLIC WORKS	ENGINEERING	DRAFTING TECHNICIAN	20
PUBLIC WORKS	ENGINEERING	MSBU COORDINATOR	23
PUBLIC WORKS	ENGINEERING	OFFICE ASSISTANT	10
PUBLIC WORKS	ENGINEERING	PERMIT TECHNICIAN II	16
PUBLIC WORKS	ENGINEERING	PROGRAM COORDINATOR	23
PUBLIC WORKS	ENGINEERING	PROJECT MANAGER	22
PUBLIC WORKS	ENGINEERING	SENIOR FISCAL ASSISTANT	14
PUBLIC WORKS	ENGINEERING	SENIOR PROJECT ENGINEER	26
PUBLIC WORKS	ENGINEERING	SENIOR PROJECT MANAGER	23
PUBLIC WORKS	ENGINEERING	SENIOR STAFF ASSISTANT	14
PUBLIC WORKS	ENGINEERING	SURVEY TECHNICIAN II	14
PUBLIC WORKS	ENGINEERING	SURVEY TECHNICIAN III	17
PUBLIC WORKS	ENGINEERING	SURVEY TECHNICIAN IV	20
DEPARTMENT	DIVISION	TITLE	PAY GRADE
PUBLIC WORKS	EROSION CONTROL - CONSERVATION	OFFICE OPERATIONS SPECIALIST	17
PUBLIC WORKS	EROSION CONTROL - CONSERVATION	SENIOR COASTAL ENGINEER	28
DEPARTMENT	DIVISION	TITLE	PAY GRADE
PUBLIC WORKS	ROAD AND BRIDGE MAINTENANCE	ASSISTANT ROAD AND BRIDGE MANAGER	27
PUBLIC WORKS	ROAD AND BRIDGE MAINTENANCE	BUDGET AND CONTRACTS COORDINATOR	20
PUBLIC WORKS	ROAD AND BRIDGE MAINTENANCE	CONSTRUCTION INSPECTOR I	16
PUBLIC WORKS	ROAD AND BRIDGE MAINTENANCE	EQUIPMENT OPERATOR	U12
PUBLIC WORKS	ROAD AND BRIDGE MAINTENANCE	FIELD SERVICES COORDINATOR	20
PUBLIC WORKS	ROAD AND BRIDGE MAINTENANCE	FIELD SERVICES SUPERVISOR	19
PUBLIC WORKS	ROAD AND BRIDGE MAINTENANCE	HEAVY EQUIPMENT COORDINATOR	23
PUBLIC WORKS	ROAD AND BRIDGE MAINTENANCE	HEAVY EQUIPMENT MECHANIC	U18
PUBLIC WORKS	ROAD AND BRIDGE MAINTENANCE	HEAVY EQUIPMENT OPERATOR I	U13
PUBLIC WORKS	ROAD AND BRIDGE MAINTENANCE	HEAVY EQUIPMENT OPERATOR II	U14
PUBLIC WORKS	ROAD AND BRIDGE MAINTENANCE	LEAD HEAVY EQUIPMENT MECHANIC	U20
PUBLIC WORKS	ROAD AND BRIDGE MAINTENANCE	MAINTENANCE CREW LEADER	U16
PUBLIC WORKS	ROAD AND BRIDGE MAINTENANCE	MAINTENANCE CREW LEADER - TRAFFIC	U16
PUBLIC WORKS	ROAD AND BRIDGE MAINTENANCE	MAINTENANCE TECHNICIAN I	U12
PUBLIC WORKS	ROAD AND BRIDGE MAINTENANCE	MAINTENANCE TECHNICIAN II	U13
PUBLIC WORKS	ROAD AND BRIDGE MAINTENANCE	MAINTENANCE TECHNICIAN II - TRAFFIC	U13
PUBLIC WORKS	ROAD AND BRIDGE MAINTENANCE	OPERATIONS SUPERVISOR	23
PUBLIC WORKS	ROAD AND BRIDGE MAINTENANCE	PROGRAM COORDINATOR	23
PUBLIC WORKS	ROAD AND BRIDGE MAINTENANCE	PROJECT MANAGER	22
PUBLIC WORKS	ROAD AND BRIDGE MAINTENANCE	PROJECT MANAGER - TRAFFIC	22
PUBLIC WORKS	ROAD AND BRIDGE MAINTENANCE	PROJECT MANAGER - TSSA	22
PUBLIC WORKS	ROAD AND BRIDGE MAINTENANCE	ROAD AND BRIDGE DIVISION DIRECTOR	28
PUBLIC WORKS	ROAD AND BRIDGE MAINTENANCE	SENIOR PROJECT MANAGER	23
PUBLIC WORKS	ROAD AND BRIDGE MAINTENANCE	SENIOR STAFF ASSISTANT	14
PUBLIC WORKS	ROAD AND BRIDGE MAINTENANCE	STAFF ASSISTANT	12
PUBLIC WORKS	ROAD AND BRIDGE MAINTENANCE	TRAFFIC OPERATIONS SUPERVISOR	23
DEPARTMENT	DIVISION	TITLE	PAY GRADE
PUBLIC WORKS	STORMWATER MANAGEMENT	DRAINAGE MAINTENANCE SUPERVISOR	20
PUBLIC WORKS	STORMWATER MANAGEMENT	ENGINEERING INTERN	23

FULL - TIME POSITIONS BY DEPARTMENT/DIVISION

DEPARTMENT	DIVISION	TITLE	PAY GRADE
PUBLIC WORKS	STORMWATER MANAGEMENT	FIELD SERVICES SUPERVISOR	19
PUBLIC WORKS	STORMWATER MANAGEMENT	HEAVY EQUIPMENT OPERATOR III	U15
PUBLIC WORKS	STORMWATER MANAGEMENT	MAINTENANCE TECHNICIAN I	U12
PUBLIC WORKS	STORMWATER MANAGEMENT	PROJECT MANAGER	22
PUBLIC WORKS	STORMWATER MANAGEMENT	SENIOR OFFICE OPERATIONS SPECIALIST	18
PUBLIC WORKS	STORMWATER MANAGEMENT	STORMWATER INSPECTOR	17
PUBLIC WORKS	STORMWATER MANAGEMENT	STORMWATER PROGRAM COORDINATOR	23
PUBLIC WORKS	STORMWATER MANAGEMENT	WATER QUALITY DIVISION DIRECTOR	28
DEPARTMENT	DIVISION	TITLE	PAY GRADE
UF/IFAS COOPERATIVE EXTENSION	UF/IFAS COOPERATIVE EXTENSION	4-H PROGRAM SPECIALIST	18
UF/IFAS COOPERATIVE EXTENSION	UF/IFAS COOPERATIVE EXTENSION	COMMUNITY RESOURCE DEVELOPMENT EXTENSION AGENT I	0
UF/IFAS COOPERATIVE EXTENSION	UF/IFAS COOPERATIVE EXTENSION	COUNTY EXTENSION DIRECTOR	EX4
UF/IFAS COOPERATIVE EXTENSION	UF/IFAS COOPERATIVE EXTENSION	EXTENSION AGENT 4H	0
UF/IFAS COOPERATIVE EXTENSION	UF/IFAS COOPERATIVE EXTENSION	EXTENSION AGENT IV NATURAL RESOURCES	22
UF/IFAS COOPERATIVE EXTENSION	UF/IFAS COOPERATIVE EXTENSION	FRUIT CROPS EXTENSION AGENT	0
UF/IFAS COOPERATIVE EXTENSION	UF/IFAS COOPERATIVE EXTENSION	MAINTENANCE TECHNICIAN III	U14
UF/IFAS COOPERATIVE EXTENSION	UF/IFAS COOPERATIVE EXTENSION	MASTER GARDENER PROGRAM SPECIALIST	18
UF/IFAS COOPERATIVE EXTENSION	UF/IFAS COOPERATIVE EXTENSION	SENIOR OFFICE OPERATIONS SPECIALIST	18
UF/IFAS COOPERATIVE EXTENSION	UF/IFAS COOPERATIVE EXTENSION	URBAN HORTICULTURE AGENT I	0
STATUTORILY MANDATED AND NON-COUNTY AGENCIES	DIVISION	TITLE	PAY GRADE
COURT ADMINISTRATION	COURT ADMINISTRATION	COURT PROGRAM SPECIALIST II	0
COURT ADMINISTRATION	COURT ADMINISTRATION	COURT PROGRAM SPECIALIST II	0
COURT ADMINISTRATION	COURT ADMINISTRATION	COURT PROGRAM SPECIALIST II	0
COURT ADMINISTRATION	COURT ADMINISTRATION	INFORMATION SYSTS APP MANAGER	0
COURT ADMINISTRATION	COURT ADMINISTRATION	NETWORK DESKTOP TECHNICIAN	0
COURT ADMINISTRATION	COURT ADMINISTRATION	NETWORK DESKTOP TECHNICIAN	0
COURT ADMINISTRATION	COURT ADMINISTRATION	SENIOR TRIAL COURT LAW CLERK	0
COURT ADMINISTRATION	COURT ADMINISTRATION	SYSTEM SUPPORT ANALYST	0
COURT ADMINISTRATION	COURT ADMINISTRATION	SYSTEM SUPPORT ANALYST	0
COURT ADMINISTRATION	COURT ADMINISTRATION	SYSTEM SUPPORT ANALYST	0
COURT ADMINISTRATION	COURT ADMINISTRATION	SYSTEMS ARCHITECTURE ANALYST	0
STATUTORILY MANDATED AND NON-COUNTY AGENCIES	DIVISION	TITLE	PAY GRADE
LEGAL COUNSEL - INMATE ATTORNEY	LEGAL COUNSEL - INMATE ATTORNEY	CRIMINAL JUSTICE ATTORNEY	26
STATUTORILY MANDATED AND NON-COUNTY AGENCIES	DIVISION	TITLE	PAY GRADE
MEDICAL EXAMINER	MEDICAL EXAMINER	CHIEF FORENSIC INVESTIGATOR	0
MEDICAL EXAMINER	MEDICAL EXAMINER	FORENSIC INVESTIGATOR	0
MEDICAL EXAMINER	MEDICAL EXAMINER	FORENSIC INVESTIGATOR	0
MEDICAL EXAMINER	MEDICAL EXAMINER	FORENSIC INVESTIGATOR	0
MEDICAL EXAMINER	MEDICAL EXAMINER	FORENSIC INVESTIGATOR	0
MEDICAL EXAMINER	MEDICAL EXAMINER	MEO ASSOC MEDICAL EXAMINER	0
MEDICAL EXAMINER	MEDICAL EXAMINER	MEO ASSOC MEDICAL EXAMINER	0
MEDICAL EXAMINER	MEDICAL EXAMINER	MEO CHIEF MEDICAL EXAMINER	0
MEDICAL EXAMINER	MEDICAL EXAMINER	MEO FORENSIC SCIENCE TECHNICIAN	0
MEDICAL EXAMINER	MEDICAL EXAMINER	MEO FORENSIC SCIENCE TECHNICIAN	0
MEDICAL EXAMINER	MEDICAL EXAMINER	MEO FORENSIC SCIENCE TECHNICIAN	0
MEDICAL EXAMINER	MEDICAL EXAMINER	MEO MEDICAL REC CLERK II	0
MEDICAL EXAMINER	MEDICAL EXAMINER	MEO MEDICAL RECORDS CLERK II	0
MEDICAL EXAMINER	MEDICAL EXAMINER	MEO OPERATIONS MANAGER	0
MEDICAL EXAMINER	MEDICAL EXAMINER	OFFICE MANAGER	0
STATUTORILY MANDATED AND NON-COUNTY AGENCIES	DIVISION	TITLE	PAY GRADE
ST. LUCIE SOIL AND WATER CONSERVATION DISTRICT	SOIL AND WATER CONSERVATION	DISTRICT ADMINISTRATOR	15
STATUTORILY MANDATED AND NON-COUNTY AGENCIES	DIVISION	TITLE	PAY GRADE
TRANSPORTATION PLANNING ORGANIZATION	TRANSPORTATION PLANNING ORGANIZATION	BICYCLE AND PEDESTRIAN COORDINATOR	18
TRANSPORTATION PLANNING ORGANIZATION	TRANSPORTATION PLANNING ORGANIZATION	SENIOR PLANNER	23
TRANSPORTATION PLANNING ORGANIZATION	TRANSPORTATION PLANNING ORGANIZATION	SENIOR PLANNER	23
TRANSPORTATION PLANNING ORGANIZATION	TRANSPORTATION PLANNING ORGANIZATION	TPO DIRECTOR	EX4
TRANSPORTATION PLANNING ORGANIZATION	TRANSPORTATION PLANNING ORGANIZATION	TPO OPERATIONS ADMINISTRATOR	20
TRANSPORTATION PLANNING ORGANIZATION	TRANSPORTATION PLANNING ORGANIZATION	TRANSPORTATION SYSTEMS MANAGER	22

FULL - TIME POSITIONS BY DEPARTMENT/DIVISION

DEPARTMENT	DIVISION	TITLE	PAY GRADE
PUBLIC WORKS	STORMWATER MANAGEMENT	FIELD SERVICES SUPERVISOR	19
PUBLIC WORKS	STORMWATER MANAGEMENT	HEAVY EQUIPMENT OPERATOR III	U15
PUBLIC WORKS	STORMWATER MANAGEMENT	MAINTENANCE TECHNICIAN I	U12
PUBLIC WORKS	STORMWATER MANAGEMENT	PROJECT MANAGER	22
PUBLIC WORKS	STORMWATER MANAGEMENT	SENIOR OFFICE OPERATIONS SPECIALIST	18
PUBLIC WORKS	STORMWATER MANAGEMENT	STORMWATER INSPECTOR	17
PUBLIC WORKS	STORMWATER MANAGEMENT	STORMWATER PROGRAM COORDINATOR	23
PUBLIC WORKS	STORMWATER MANAGEMENT	WATER QUALITY DIVISION DIRECTOR	28
DEPARTMENT	DIVISION	TITLE	PAY GRADE
UF/IFAS COOPERATIVE EXTENSION	UF/IFAS COOPERATIVE EXTENSION	4-H PROGRAM SPECIALIST	18
UF/IFAS COOPERATIVE EXTENSION	UF/IFAS COOPERATIVE EXTENSION	COMMUNITY RESOURCE DEVELOPMENT EXTENSION AGENT I	0
UF/IFAS COOPERATIVE EXTENSION	UF/IFAS COOPERATIVE EXTENSION	COUNTY EXTENSION DIRECTOR	EX4
UF/IFAS COOPERATIVE EXTENSION	UF/IFAS COOPERATIVE EXTENSION	EXTENSION AGENT 4H	0
UF/IFAS COOPERATIVE EXTENSION	UF/IFAS COOPERATIVE EXTENSION	EXTENSION AGENT IV NATURAL RESOURCES	22
UF/IFAS COOPERATIVE EXTENSION	UF/IFAS COOPERATIVE EXTENSION	FRUIT CROPS EXTENSION AGENT	0
UF/IFAS COOPERATIVE EXTENSION	UF/IFAS COOPERATIVE EXTENSION	MAINTENANCE TECHNICIAN III	U14
UF/IFAS COOPERATIVE EXTENSION	UF/IFAS COOPERATIVE EXTENSION	MASTER GARDENER PROGRAM SPECIALIST	18
UF/IFAS COOPERATIVE EXTENSION	UF/IFAS COOPERATIVE EXTENSION	SENIOR OFFICE OPERATIONS SPECIALIST	18
UF/IFAS COOPERATIVE EXTENSION	UF/IFAS COOPERATIVE EXTENSION	URBAN HORTICULTURE AGENT I	0
STATUTORILY MANDATED AND NON-COUNTY AGENCIES	DIVISION	TITLE	PAY GRADE
COURT ADMINISTRATION	COURT ADMINISTRATION	COURT PROGRAM SPECIALIST II	0
COURT ADMINISTRATION	COURT ADMINISTRATION	COURT PROGRAM SPECIALIST II	0
COURT ADMINISTRATION	COURT ADMINISTRATION	COURT PROGRAM SPECIALIST II	0
COURT ADMINISTRATION	COURT ADMINISTRATION	INFORMATION SYSTS APP MANAGER	0
COURT ADMINISTRATION	COURT ADMINISTRATION	NETWORK DESKTOP TECHNICIAN	0
COURT ADMINISTRATION	COURT ADMINISTRATION	NETWORK DESKTOP TECHNICIAN	0
COURT ADMINISTRATION	COURT ADMINISTRATION	SENIOR TRIAL COURT LAW CLERK	0
COURT ADMINISTRATION	COURT ADMINISTRATION	SYSTEM SUPPORT ANALYST	0
COURT ADMINISTRATION	COURT ADMINISTRATION	SYSTEM SUPPORT ANALYST	0
COURT ADMINISTRATION	COURT ADMINISTRATION	SYSTEM SUPPORT ANALYST	0
COURT ADMINISTRATION	COURT ADMINISTRATION	SYSTEMS ARCHITECTURE ANALYST	0
STATUTORILY MANDATED AND NON-COUNTY AGENCIES	DIVISION	TITLE	PAY GRADE
LEGAL COUNSEL - INMATE ATTORNEY	LEGAL COUNSEL - INMATE ATTORNEY	CRIMINAL JUSTICE ATTORNEY	26
STATUTORILY MANDATED AND NON-COUNTY AGENCIES	DIVISION	TITLE	PAY GRADE
MEDICAL EXAMINER	MEDICAL EXAMINER	CHIEF FORENSIC INVESTIGATOR	0
MEDICAL EXAMINER	MEDICAL EXAMINER	FORENSIC INVESTIGATOR	0
MEDICAL EXAMINER	MEDICAL EXAMINER	FORENSIC INVESTIGATOR	0
MEDICAL EXAMINER	MEDICAL EXAMINER	FORENSIC INVESTIGATOR	0
MEDICAL EXAMINER	MEDICAL EXAMINER	FORENSIC INVESTIGATOR	0
MEDICAL EXAMINER	MEDICAL EXAMINER	MEO ASSOC MEDICAL EXAMINER	0
MEDICAL EXAMINER	MEDICAL EXAMINER	MEO ASSOC MEDICAL EXAMINER	0
MEDICAL EXAMINER	MEDICAL EXAMINER	MEO CHIEF MEDICAL EXAMINER	0
MEDICAL EXAMINER	MEDICAL EXAMINER	MEO FORENSIC SCIENCE TECHNICIAN	0
MEDICAL EXAMINER	MEDICAL EXAMINER	MEO FORENSIC SCIENCE TECHNICIAN	0
MEDICAL EXAMINER	MEDICAL EXAMINER	MEO FORENSIC SCIENCE TECHNICIAN	0
MEDICAL EXAMINER	MEDICAL EXAMINER	MEO MEDICAL REC CLERK II	0
MEDICAL EXAMINER	MEDICAL EXAMINER	MEO MEDICAL RECORDS CLERK II	0
MEDICAL EXAMINER	MEDICAL EXAMINER	MEO OPERATIONS MANAGER	0
MEDICAL EXAMINER	MEDICAL EXAMINER	OFFICE MANAGER	0
STATUTORILY MANDATED AND NON-COUNTY AGENCIES	DIVISION	TITLE	PAY GRADE
ST. LUCIE SOIL AND WATER CONSERVATION DISTRICT	SOIL AND WATER CONSERVATION	DISTRICT ADMINISTRATOR	15
STATUTORILY MANDATED AND NON-COUNTY AGENCIES	DIVISION	TITLE	PAY GRADE
TRANSPORTATION PLANNING ORGANIZATION	TRANSPORTATION PLANNING ORGANIZATION	BICYCLE AND PEDESTRIAN COORDINATOR	18
TRANSPORTATION PLANNING ORGANIZATION	TRANSPORTATION PLANNING ORGANIZATION	SENIOR PLANNER	23
TRANSPORTATION PLANNING ORGANIZATION	TRANSPORTATION PLANNING ORGANIZATION	SENIOR PLANNER	23
TRANSPORTATION PLANNING ORGANIZATION	TRANSPORTATION PLANNING ORGANIZATION	TPO DIRECTOR	EX4
TRANSPORTATION PLANNING ORGANIZATION	TRANSPORTATION PLANNING ORGANIZATION	TPO OPERATIONS ADMINISTRATOR	20
TRANSPORTATION PLANNING ORGANIZATION	TRANSPORTATION PLANNING ORGANIZATION	TRANSPORTATION SYSTEMS MANAGER	22

PART-TIME POSITIONS BY DEPARTMENT/DIVISION

DEPARTMENT	DIVISION	TITLE	PAY GRADE
COUNTY ATTORNEY	CRIMINAL JUSTICE	LABORATORY TECHNICIAN - P/T	14
DEPARTMENT	DIVISION	TITLE	PAY GRADE
COMMUNITY SERVICES	VETERAN SERVICES	VETERAN SERVICES DRIVER - P/T	09
DEPARTMENT	DIVISION	TITLE	PAY GRADE
UF/IFAS COOPERATIVE EXTENSION	UF/IFAS COOPERATIVE EXTENSION	SENIOR STAFF ASSISTANT - P/T	14
DEPARTMENT	DIVISION	TITLE	PAY GRADE
FACILITIES	ADMIN CUSTODIAL	CUSTODIAN - P/T	U8
DEPARTMENT	DIVISION	TITLE	PAY GRADE
FACILITIES	COURT FACILITIES	CUSTODIAN - P/T	U8
DEPARTMENT	DIVISION	TITLE	PAY GRADE
LIBRARY SERVICES	LIBRARY SERVICES	MAINTENANCE TECHNICIAN I - P/T	U12
LIBRARY SERVICES	LIBRARY SERVICES	PROGRAM ASSISTANT - P/T	12
LIBRARY SERVICES	LIBRARY SERVICES	PROGRAM CLERK - P/T	9
DEPARTMENT	DIVISION	TITLE	PAY GRADE
MOSQUITO CONTROL	INSPECTION DIVISION	EQUIPMENT OPERATOR - P/T	U12
MOSQUITO CONTROL	INSPECTION DIVISION	LEAD FOG TRUCK DRIVER- P/T	U13
DEPARTMENT	DIVISION	TITLE	PAY GRADE
PARKS AND RECREATION	PARKS & SPECIAL FACILITIES	MAINTENANCE TECHNICIAN I - P/T	U12
PARKS AND RECREATION	PARKS & SPECIAL FACILITIES	PROGRAM ATTENDANT - P/T	7
PARKS AND RECREATION	PARKS & SPECIAL FACILITIES	RECREATION SUPERVISOR I - P/T	U11
PARKS AND RECREATION	PARKS & SPECIAL FACILITIES	STAFF ASSISTANT - P/T	12
DEPARTMENT	DIVISION	TITLE	PAY GRADE
PARKS AND RECREATION	CLUBHOUSE / PRO SHOP	GOLF COURSE CUSTODIAN - P/T	U7
PARKS AND RECREATION	CLUBHOUSE / PRO SHOP	PRO SHOP ATTENDANT - P/T	7
PARKS AND RECREATION	CLUBHOUSE / PRO SHOP	PROGRAM ASSISTANT - P/T	12
PARKS AND RECREATION	CLUBHOUSE / PRO SHOP	RANGE ATTENDANT - P/T	6
DEPARTMENT	DIVISION	TITLE	PAY GRADE
PARKS AND RECREATION	REGIONAL PARKS & STADIUMS	PARKS AND RECREATION ATTENDANT - P/T	U11
PARKS AND RECREATION	REGIONAL PARKS & STADIUMS	PROGRAM ATTENDANT - P/T	7
PARKS AND RECREATION	REGIONAL PARKS & STADIUMS	RECREATION SUPERVISOR I - P/T	U11
PARKS AND RECREATION	REGIONAL PARKS & STADIUMS	RECREATION SUPERVISOR II - P/T	U13
PARKS AND RECREATION	REGIONAL PARKS & STADIUMS	STAFF ASSISTANT - P/T	12
DEPARTMENT	DIVISION	TITLE	PAY GRADE
PUBLIC SAFETY	PUBLIC SAFETY AND COMMUNICATIONS	PUBLIC SAFETY COMMUNICATIONS OFFICER I - P/T	14
PUBLIC SAFETY	PUBLIC SAFETY AND COMMUNICATIONS	PUBLIC SAFETY COMMUNICATIONS OFFICER II - P/T	16
DEPARTMENT	DIVISION	TITLE	PAY GRADE
PUBLIC SAFETY	MARINE SAFETY	OCEAN RESCUE LIFEGUARD - P/T	U17

CONTACT LIST

HUMAN RESOURCES STAFF



ROGER POITRAS
ADMINISTRATION BLDG
2300 VIRGINIA AVE
FORT PIERCE, FL 34982

PHONE: (772) 462-1401
FAX: (772) 462-2361



Thomas Epsky, MSHRDA, SPHR, SHRM-SCP, IPMA-SCP **Human Resources and Risk Management Director - (772) 462-4056**

- Provides executive leadership and administers all Human Resources & Risk Management activities for St. Lucie County BOCC
- Ensures compliance with all federal and state employment laws
- Administration and interpretation of rules, policies, procedures and collective bargaining agreement

Shanelle Tomlin, MSHRM, MPA, SHRM-CP, PHR **Human Resources and Risk Management Assistant Director - (772) 462-5267**

- Assists with the overall management and administration of Human Resources & Risk Management activities for St. Lucie County BOCC
- Compensation, Recruitment and Reclassifications
- Position Control/HRIS/KRONOS/NEOGOV Administrator

Enrique Carmona – Human Resources Analyst: (772) 462-1548

- Divisional Coordination
- Employee Handbook / Standard Operations Procedures (SOPs)
- Budget and Fiscal Management
- Process Automation
- Special Projects

Michelle Crews, Senior Office Operations Specialist: (772) 462-1404

- Employee ID Card Maintenance
- Employee Engagement
- County-Wide Volunteer & Specialist Coordinator
- Tuition Reimbursement
- LaserFiche Custodian/Employee Reports/Data Input
- Verifications of Employment (VOEs)
- Contract Management
- Purchasing and Fiscal Assistance

Prakash Sharma, PHR, Human Resources Manager: (772) 462-1547

- Employee and Labor Relations
- Talent Acquisition and Retention
- Workforce and Performance Management
- Diversity, Equity, and Inclusion Initiatives
- Succession Planning
- EEO Reporting Compliance

Sue McNichol, Talent Acquisition Coordinator: (772) 462-1536

- Talent Acquisition / Recruitment
- New Hire Orientation
- Background Screening
- I-9 Management
- NEOGOV Administrator (Insight, OHC, and Onboard)

Franklin Thomas, Human Resources Specialist: (772) 462-1401

- Provides Administrative Assistance for the HR Department
- Lobby Front-Desk/Mailroom Coordination

CONTACT LIST

HUMAN RESOURCES STAFF



ROGER POITRAS
ADMINISTRATION BLDG
2300 VIRGINIA AVE
FORT PIERCE, FL 34982

PHONE: (772) 462-1401
FAX: (772) 462-2361



Kara DePasquale, M.B.A, A.R.M., Risk and O.E.D. Manager: (772) 462-6419

- Risk Management
- Workers Compensation, Risk & Liability Insurance
- Inmate Medical
- Organizational Effectiveness and Development (O.E.D.)

Danielle Spera, Training & O.E.D. Specialist: (772) 462-1178

- Assists with Organizational Effectiveness and Development Programs
- Assists with Risk Management Functions
- Unemployment Claims
- Exit Interviews
- Public Records Requests

Teah Baker, SHRM-CP, IPMA-CP, Total Rewards Manager: (772) 462-1613

- Benefits, Health, Wellness, and Retirement Administration
- Leave Management, to include Kronos, FMLA, etc.
- Employee Health Center Relationship Manager
- Compensation and Position Management
- HRIS Management

Amy McNair, Senior Human Resources Analyst: (772) 462-1784

- Payroll / KRONOS Coordinator
- Position Control
- Salary and Compensation Surveys/Analysis
- Employee Status Changes/LaserFiche

Vacant, Total Rewards Specialist: (772) 462-2303

- HR Metrics and Data Management
- Assists with Benefits and Wellness Administration
- Assists with Salary and Compensation Surveys/Analysis
- Assists with Position Control/HRIS Management

Ancillary Staff

Joe Guzman, Relation Onsite Risk Management Specialist: (772) 462-1805

- Accident & Injury Risk Management
- Safety Training (OSHA, DDC, CPR)
- OSHA Compliance/Safety Inspections

Vacant, Relation Onsite Client Service Specialist: (772) 462-1783

- Countywide Benefits Assistance
- FRS Assistance and Billing
- Conducts New Hire Benefits Orientation

Yanisa Cuevas, Florida Blue Onsite Service Rep: (772) 462-1549

- Provides support on employee benefits and eligibility including Health, Life (STD/LTD, Death), Dental, Health Equity, and Blue Medicare
- Processes related benefit claims