

ST. LUCIE COUNTY B.O.C.C.

MOSQUITO CONTROL

**ADOPTED BUDGET FOR
FISCAL YEAR 1995-96**

MOSQUITO CONTROL

DESCRIPTION

As set forth in Section 2-9-29 of the St. Lucie County Code of Ordinances, and Compiled Laws, "...all depressions, marshes, ponds, lakes, lagoons, ditches and other places wherein mosquitoes and sandflies incubate or hatch are hereby declared to be a public nuisance, as harmful or inimical to the comfort, health and welfare of the inhabitants and are to be abated as hereinafter provided." Pursuant to Section 2-9-20, the Mosquito Control District is directed to do any and all things necessary to control and eliminate mosquitoes and sandflies and is further authorized to erect and install pumps, dikes and other structures and equipment and apply such chemicals and other substances necessary to fulfill this duty. The abatement of nuisance arthropods (including mosquitoes and sandflies) has been declared to constitute a public purpose necessary for the maintenance of the health of the inhabitants of the District.

1994-95 FY ACHIEVEMENTS

For the partial year, from Oct. 1, 1994 through Mar. 20, 1995, the District accomplished the following tasks:

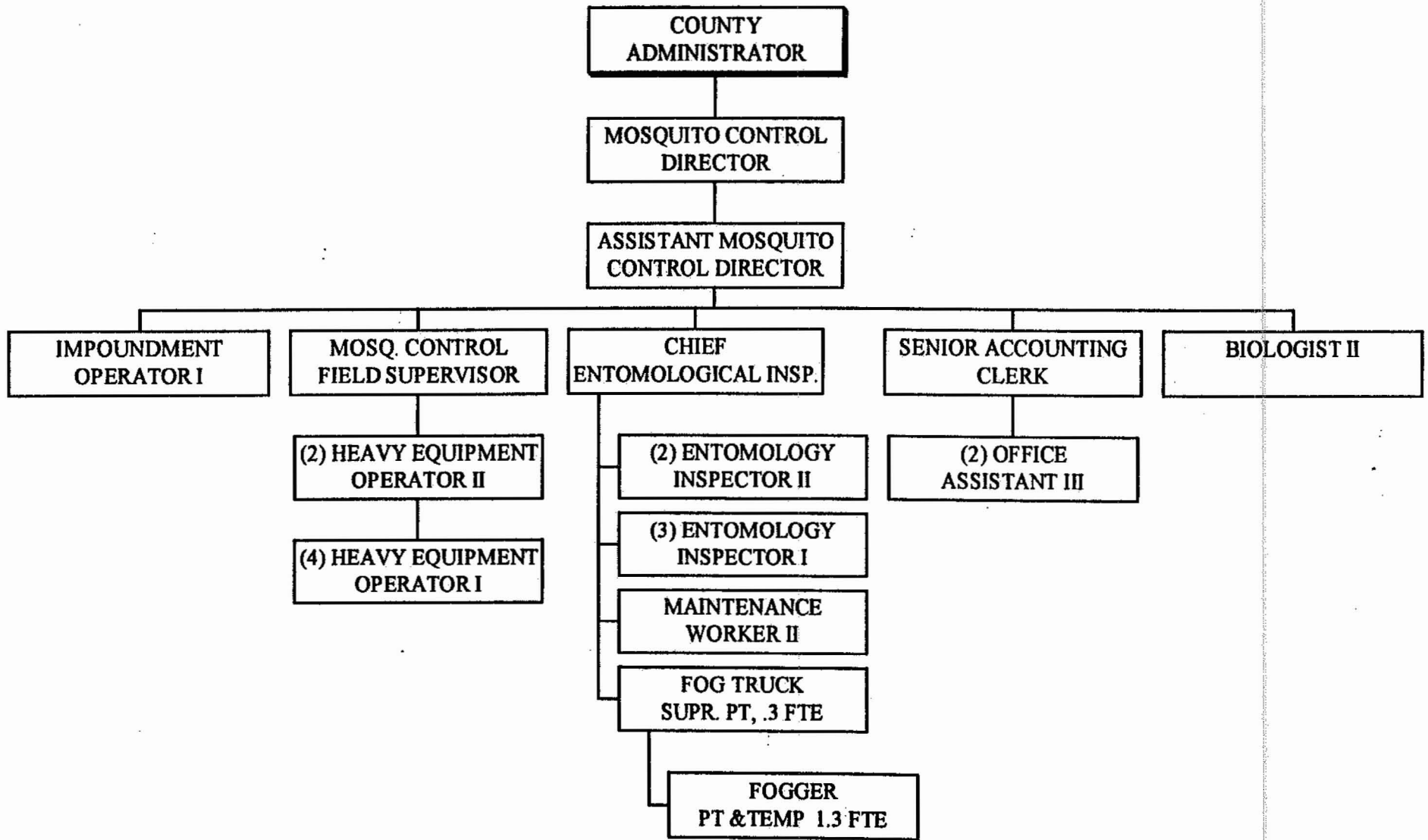
- * 172,216 Acres of ground adulticiding (923,868 acres in FY '93-94)
- * 0 Acres of aerial larviciding (3,056 acres in FY '93-94)
- * 190.77 Acres of ground larviciding (1,078.63 acres in FY '93-94)
- * 92 hours of pumping in Impoundments or 552,000 gallons (54,691 hours of pumping in FY '93-94)
- * Grants Approved:
 - FCT \$816,400 - Land Acquisition, - USFWS \$768,750 - Land Acquisition
 - SWIM \$50,000 - Impoundment Restoration, - EPA APDP \$85,297 - Impoundment Restoration
 - NEP Lagoon Partners Fund \$5,000 - Public Awareness, - EPA Env. Education - \$44,102 (in process)
 - FCT/USFWS-Middle Cove (in process) Land Acquisition, Blind Creek-CARL/SOR \$6.6 million (in process) Land Acq
- Monitoring and Research Program- Wading Bird Enhancement, Tarpon Enhancement, Fiddler Crab Evaluation, Fish Entrainment through pumps, Aeration Studies, Mullet Stock Enhancement, Cooperation in Mangrove Trimming Study by State.
 - * Fog Truck conversions to Bison Format - (4-trucks), Pump overhauls - (in process),
 - * Impoundment #10A - Surveying and Engineering (in process) for reinstatement of Management,
 - * Daily Inspection (in process), New Aeration Station (Imp 8C), Dike Maintenance (general),
 - * Waste Tire Collections - 3.99 Tons

1995-96 GOALS AND OBJECTIVES

The goals for adulticiding and larviciding are estimates based upon past performance. Each year, mosquito breeding is actually, extremely variable, and as such, can range from production which requires 800,000 acres of ground adulticiding treatment, to production which requires 1.5 million acres of ground adulticiding treatment. The amount of mosquito production in the salt marsh areas depends upon the number of impoundments under public control. As the number of landowners resistant to mosquito control on their property increases, the amount of aerial larviciding increases.

1. *1.45 million acres of adulticiding.*
2. *7,200 acres of aerial larviciding, ground larviciding of 4,000 acres*
3. *Management of 5,000 acres of saltmarsh wetlands.*
 - *Maintenance/operation of 37 miles of dikes, 16 pump stations (50,000 hours of pumping)*
 - *16 aeration stations, 250 perimeter culverts and tidegates.*
4. *Land acquisition grant program and wetland restoration grant program.*

**MOSQUITO CONTROL DISTRICT
FISCAL YEAR 1995-96**



**MOSQUITO CONTROL
BUDGET SUMMARY
FOR FISCAL YEAR 1995-96**

MOSQUITO CONTROL	1993-94 ACTUAL	1994-95 BUDGET	1995-96 BUDGET	AMOUNT OF DIFFERENCE	% DIFF
Salaries & Benefits	786,542	840,098	813,174	(26,924)	-3%
Operating Expenses	593,491	644,557	627,720	(16,837)	-3%
Capital Outlay	79,973	106,144	46,000	(60,144)	-57%
Grants	4,326	5,000	0	(5,000)	-100%
Other	112,232	297,525	275,753	(21,772)	-7%
Total:	1,576,564	1,893,324	1,762,647	(130,677)	-7%
Personnel (FTE):	22.6	22.6	22.6	0	0%

PERSONNEL (Full Time Equivalent):

Mosquito Control Director	1
Asst Mosquito Control Director	1
Mosquito Control Field Supervisor	1
Biologist II	1
Heavy Equipment Operator II	2
Heavy Equipment Operator I	4
Chief Entomological Inspector	1
Entomological Inspector II	2
Entomological Inspector I	3
Maintenance Worker II	1
Impoundment Operator I	1
Senior Accounting Clerk	1
Office Assistant III	2
Fog Truck Supervisor (Part-Time)	0.3
Foggers(Part Time)	0.3
Foggers (P/T Temporary)	1

Total Personnel (FTE): **22.6**

DEPARTMENTAL ALLOCATIONS

