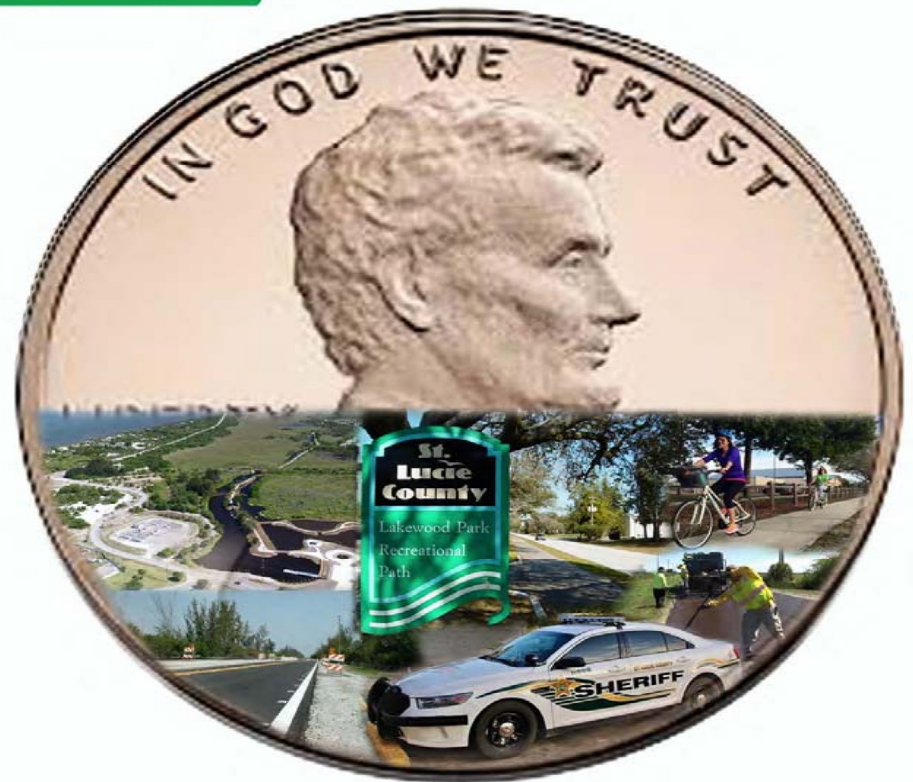


**Board of County  
Commissioners  
Regular Meeting  
Tuesday, July 26, 2016**



**Fiscal Year 2017  
Recommended Budget**



**An Investment  
in Our Future**

# Agenda

- Recommended FY 2016-2017 Budget Recap
  - Accomplishments
  - Budget Summary
  - Reserves/Fund Balance
  - Budget Detail
  - Millage Rates
  - Impacts - Millage Rate Change
- Citizens' Budget Committee
  - Recommendation



# Budget Summary

**The FY 2016-17 recommended budget is \$504.7 million which represents a decrease of \$2.3 million or 0.5% from the prior fiscal year amended budget**



# Accomplishments



# Accomplishments

## CONSTRUCTION OF THE 2<sup>ND</sup> STREET RECONSTRUCTION PROJECT





# Accomplishments

## FUNDING AND ACQUISITION OF 800 MHZ RADIO SYSTEM



# Accomplishments

COMPLETION OF THE BECKER HOUSE NATURE/ECOTOURISM CENTER



# Accomplishments

NEW HANGAR AT TREASURE COAST AIRPORT - 50/50 PARTNERSHIP WITH STATE AND THE COUNTY FUNDING





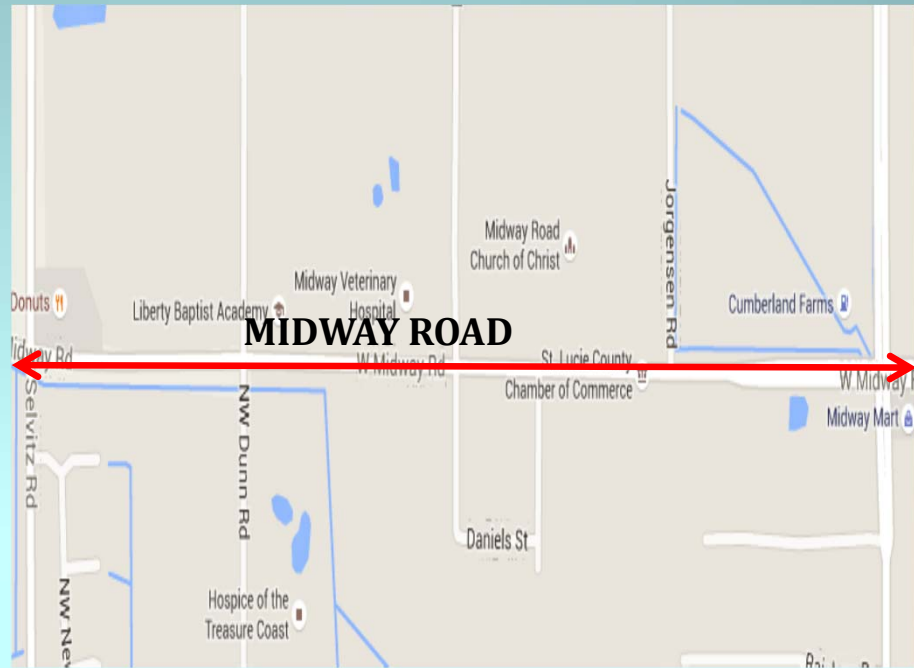
# Accomplishments

## RENOVATION OF THE ROSSER BLVD BRANCH LIBRARY



# Accomplishments

## MIDWAY ROAD (SELVITZ ROAD-25<sup>TH</sup> STREET) WIDENING PROJECT



# Accomplishments

EXPANDED CAPACITY OF THE NORTH HUTCHINSON ISLAND WASTEWATER TREATMENT PLANT



# Accomplishments

FUNDING AND IMPLEMENTATION OF FPL ENERGY EFFICIENCY PROJECTS



# Accomplishments

- Successful in securing close to \$126 million in State appropriations directly and indirectly to St. Lucie County
- Restored all libraries to five day a week services - \$360,000
- Implemented phase I of a paperless permitting process
- Three key transit fixed route lines expanded service for evenings and Saturdays, \$280,000
- Jail Equipment/Maintenance Staffing – \$171,792. Address ongoing maintenance conditions and investments in critical capital equipment.
- Public Safety investment in the Sheriff's Office:
  - Step Plan (\$2.3 million)
  - Health Insurance (\$2.1 million)





# Budget Stabilization Fund

- *HISTORICAL USE OF RESERVES*
- *RESERVE POLICY*



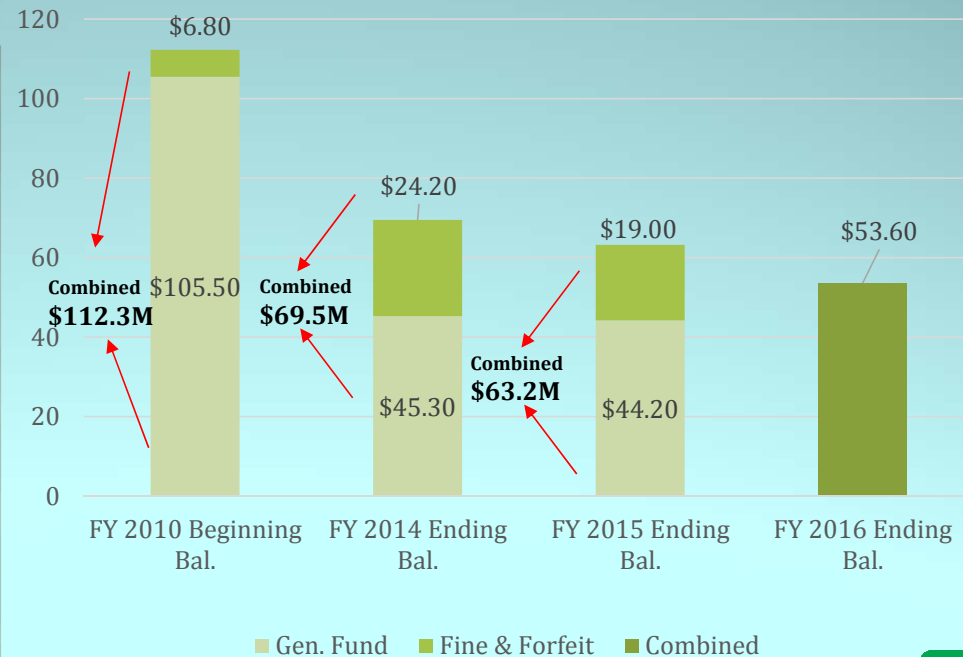
# Budget Stabilization Fund (Reserves)

- **Current Conditions.** Operating expenses in the General Fund/Fine & Forfeiture Fund are exceeding operating revenues.
  - FY 2010 thru FY 2015 the County has utilized \$49.1 million of the General Fund and Fine Forfeiture fund balance.
  - Expenses exceed revenue annually during the same period of time, averaging \$7.2 million.
- **Future Direction.** Changing our condition requires discipline through fiscal year 2020. If we remain disciplined, it is possible that we can reverse the trend so that our operating revenues cover our operating expenses.



# Reserve History FY 2010 – FY 2016

- 52% of the 112.3 million will be spent by the end of FY 2016
- Leaving 53.60 million of which:
  - 36.5 million is set aside as part of our reserve balance
    - \$16.5 million for emergency reserves
    - \$14 million for budget stabilization
    - \$6 million for Transportation Infrastructure reserves

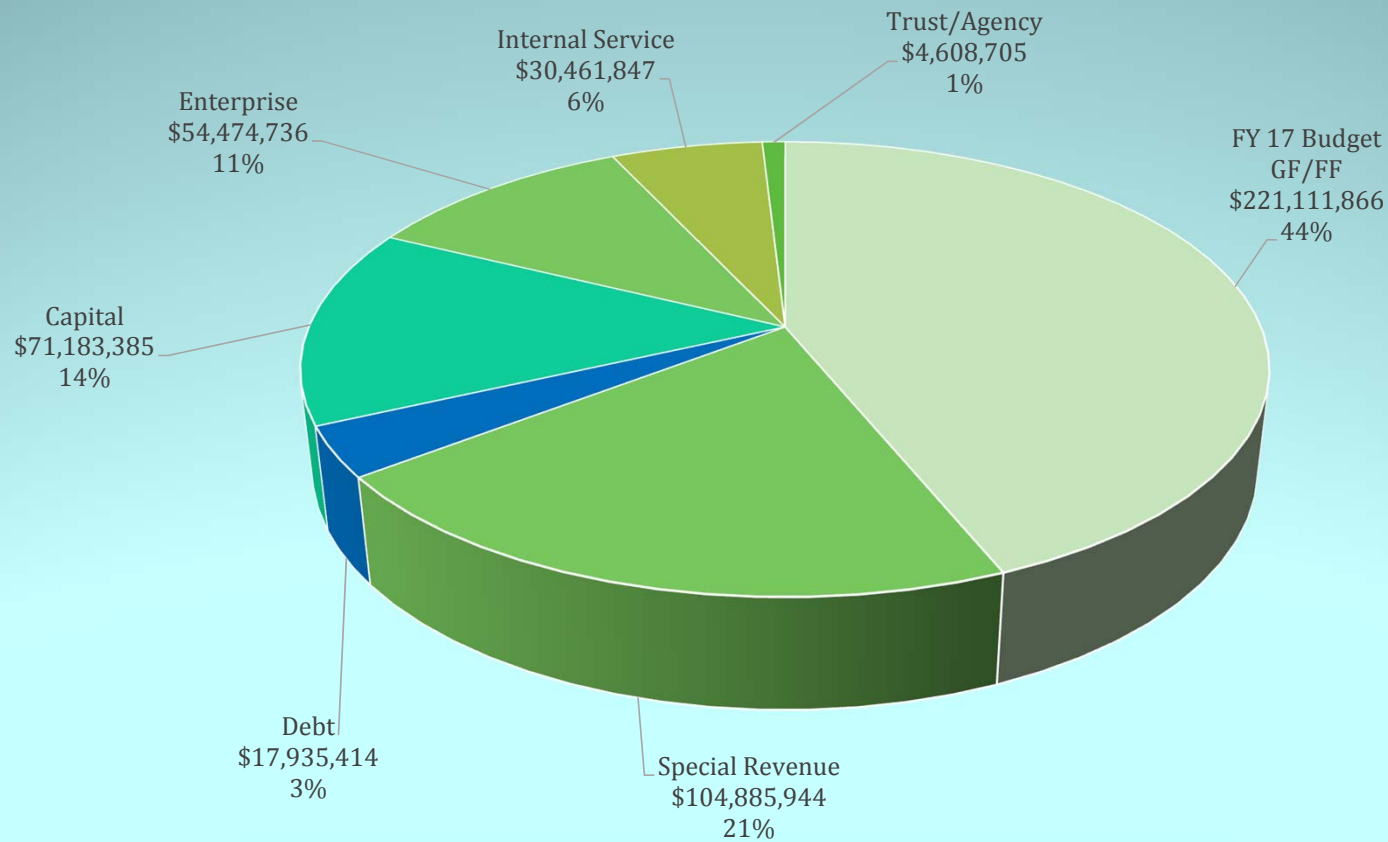


# Budget Detail

- *OVERALL BUDGET*
- *GENERAL FUND/FINE & FORFEITURE FUND*

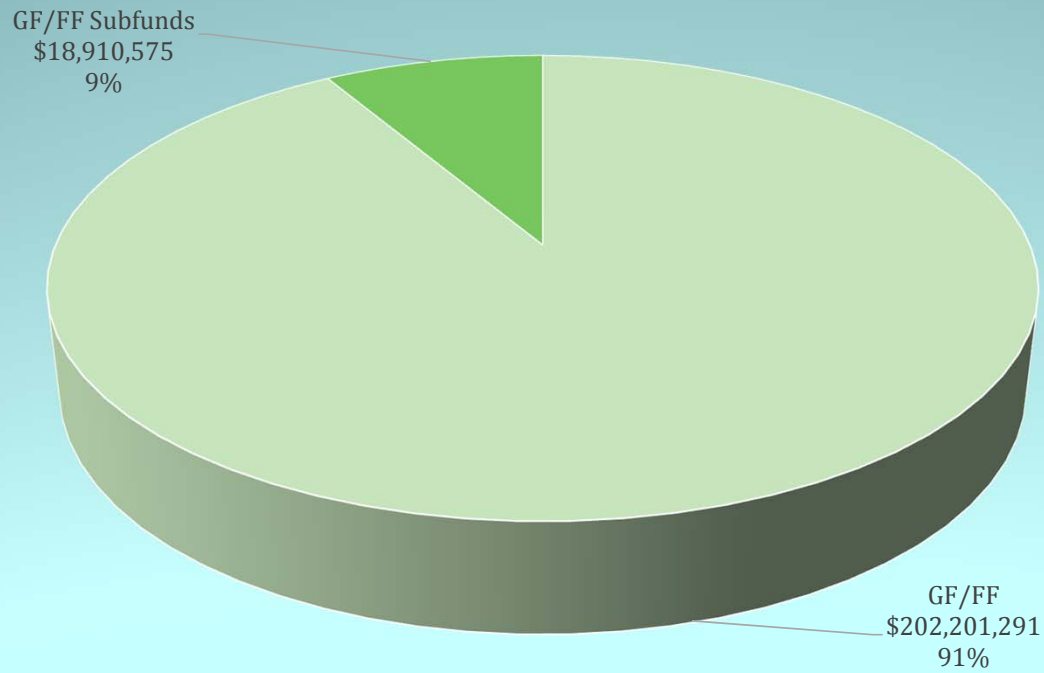


# FY 2017 Total Recommended Budget \$504.7 Million

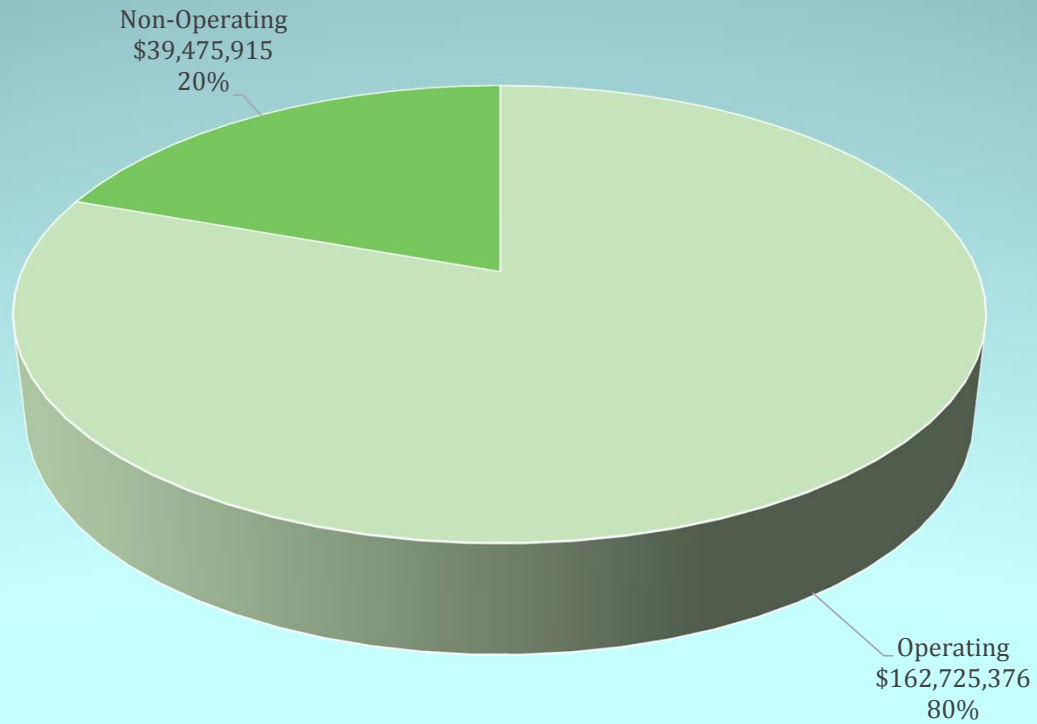




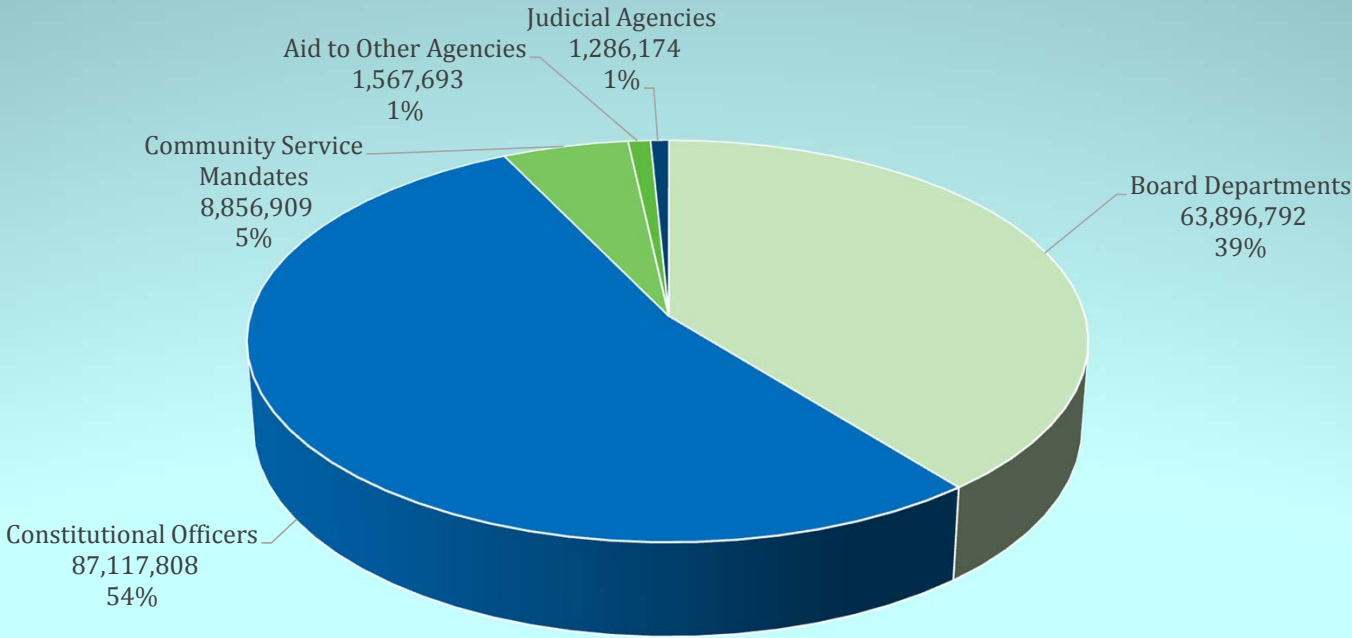
# FY 2017 General Fund/ Fine & Forfeiture Fund Budget \$221.1 Million



# FY 2017 General Fund/ Fine & Forfeiture Fund Budget \$201.4 Million



# General Fund / Fine & Forfeiture Operating Expenses \$162.7 Million



# General Fund/Fine & Forfeiture

The County's main operations are located in the General Fund/Fine & Forfeiture Fund portion of the FY 16-17 Recommended Budget, which amount to \$162.7 M for County operations. This represents an increase of 3.88% or \$8.0 M.



# Property Taxes

- *PROPERTY VALUES*
- *MILLAGES*

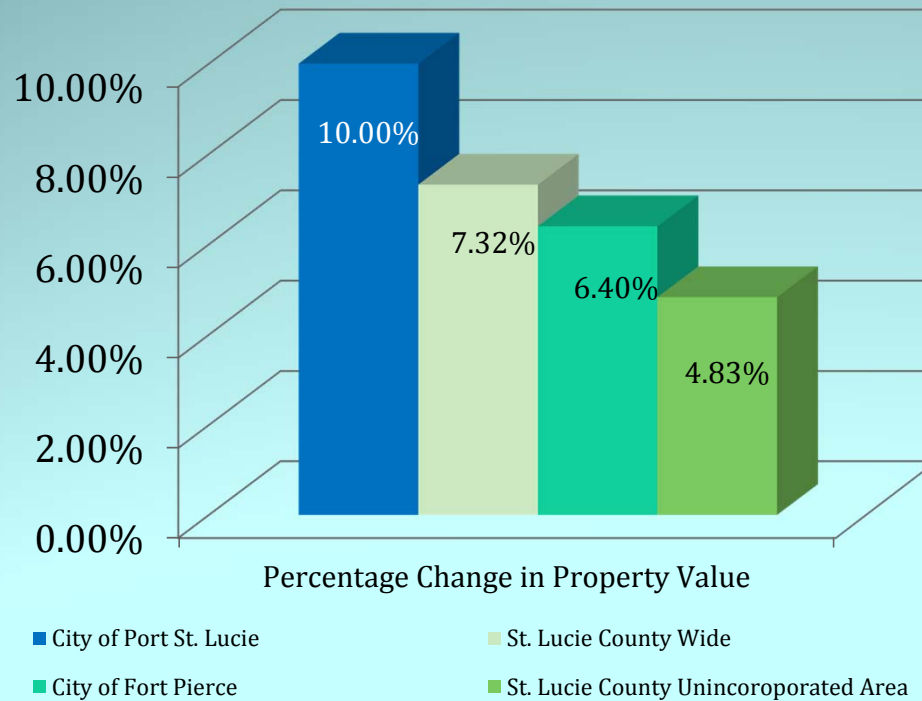




# Taxable Property Values



# 2017 % Change in Property Appraiser Property Valuation



Taxing Authority	Property Value
City of Port St. Lucie	\$7.900 Billion
St. Lucie County – County Wide	\$17.500 Billion
City of Fort Pierce	\$2.115 Billion
St. Lucie County – Unincorporated	\$7.472 Billion



# Recommended FY 2017 Millage Changes

	Recommended Millage	Millage Change	Taxes @ 95%
General Fund	4.1077	-0.0196	\$ (325,003)
Fine & Forfeiture Fund	3.2838	0.0139	\$ 230,487
Mosquito Control Fund	0.2164	-0.0249	\$ (405,554)
Unincorporated MSTU Fund	0.3840	-0.0540	\$ (383,340)
Port Property Bond	0.0000	-0.0154	\$ (258,502)
Erosion Control	0.0925	0.0000	\$ 0
Stormwater MSTU	0.3497	0.0000	\$ 0
Law Enforcement MSTU	0.5103	0.0000	\$ 0
Parks MSTU	0.2313	0.0000	\$ 0
<u>Transit MSTU</u>	<u>0.1269</u>	<u>0.0000</u>	<u>\$ 0</u>
<b>Total</b>	<b>9.3026</b>	<b>-0.1000</b>	<b>\$ (1,141,913)</b>



## WORKSHEET ANALYSIS OF ROLL-BACK MILLAGE RATE FOR FISCAL YEAR 2016-2017

	A	B	C	D	E	F	G	H
FUND	2015-16	2015-16	2016-17	2016-17	2016-17	2016-17	Prior	2016-17
NAME	Millage	Taxes	Rollback	Rollback	Millage	Taxes	Year's	Gross
			Rate	Taxes			Value <sup>1</sup>	Value <sup>1</sup>
<b>COUNTY</b>								
GENERAL FUND	4.1273	67,124,790	3.8814	67,747,887	4.1077	71,697,840	16,263,608,260	17,454,497,567
FINE & FORFEITURE	3.2699	53,180,373	3.0752	53,676,071	3.2838	57,317,079	16,263,608,260	17,454,497,567
<b>SUBTOTAL COUNTY</b>	<b>7.3972</b>	<b>120,305,163</b>	<b>6.9566</b>	<b>121,423,958</b>	<b>7.3915</b>	<b>129,014,919</b>		
<b>DEPENDENT DISTRICTS</b>								
EROSION CONTROL - ZONE E	0.0925	1,504,384	0.0868	1,515,050	0.0925	1,614,541	16,263,608,260	17,454,497,567
MOSQUITO DISTRICT 2	0.2413	3,854,965	0.2265	3,883,241	0.2164	3,710,081	15,975,820,155	17,144,552,689
<b>SUBTOTAL DEPENDENT DIST.</b>	<b>0.3338</b>	<b>5,359,349</b>	<b>0.3133</b>	<b>5,398,292</b>	<b>0.3089</b>	<b>5,324,622</b>		
<b>TOTAL COUNTY/DEPENDENT DIST</b>	<b>7.7310</b>	<b>125,664,512</b>	<b>7.2699</b>	<b>126,822,249</b>	<b>7.7004</b>	<b>134,339,541</b>		

## WORKSHEET ANALYSIS OF ROLL-BACK MILLAGE RATE FOR FISCAL YEAR 2016-2017

	A	B	C	D	E	F	G	H
FUND							Prior	
NAME	Millage	Taxes	Rollback	Rollback	Millage	Taxes	Year's	Gross
			Rate	Taxes			Value <sup>1</sup>	Value <sup>1</sup>
<b>MUNICIPAL SERVICE TAXING UNITS (MSTUs)</b>								
UNINCORPORATED SERVICES 3	0.4380	3,122,185	0.4190	3,130,987	0.3840	2,869,448	7,128,275,623	7,472,521,586
STORMWATER 3	0.3497	2,492,758	0.3345	2,499,558	0.3497	2,613,141	7,128,275,623	7,472,521,586
LAW ENFORCEMENT 3	0.5103	3,637,559	0.4881	3,647,338	0.5103	3,813,228	7,128,275,623	7,472,521,586
PARKS MSTU 4	0.2313	3,771,281	0.2172	3,797,882	0.2313	4,044,429	16,304,717,256	17,485,643,577
TRANSIT MSTU	0.1269	2,063,852	0.1191	2,078,831	0.1269	2,214,976	16,263,608,260	17,454,497,567
<b>SUBTOTAL MSTU</b>	<b>1.6562</b>	<b>15,087,635</b>	<b>1.5779</b>	<b>15,154,595</b>	<b>1.6022</b>	<b>15,555,222</b>		



# Impact of Tax Increase on a Home with a \$107,344 Taxable Value

## County-Wide Millage Impact for a Homesteaded Property -Property Value \$157,500

Year	CW Tax Impact	Millage Rate	Residential Taxable Value	2016 County Wide Property Tax Amount	Valuation increase @ .70% CPI	Millage Increase/ (Decrease)	2017 County Wide Property Tax Amount	% Change
2017	CW Tax Impact	-0.0460	\$107,344	\$821.42	5.17	-4.94	821.65	0.03%



# Citizen Budget Committee

*RECOMMENDATIONS*



# Citizens' Budget Committee

On Friday, July 15, 2016, the CBC adopted a resolution recommending:

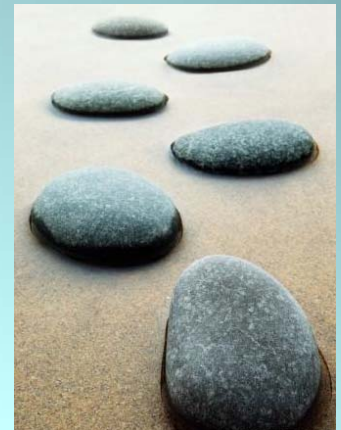
- The Committee recommends a budget of \$504,661,897, which includes a reduction of the millage rate by 0.100 mills or an estimated reduction of \$1.141 million in St. Lucie County, Florida as follows:

• General Fund	(0.0196)
• Fine & Forfeiture Fund	0.0139
• Mosquito Control Fund	(0.0249)
• Unincorporated MSTU Fund	(0.0540)
• Port Property Bond	(0.0154)



# Next Steps

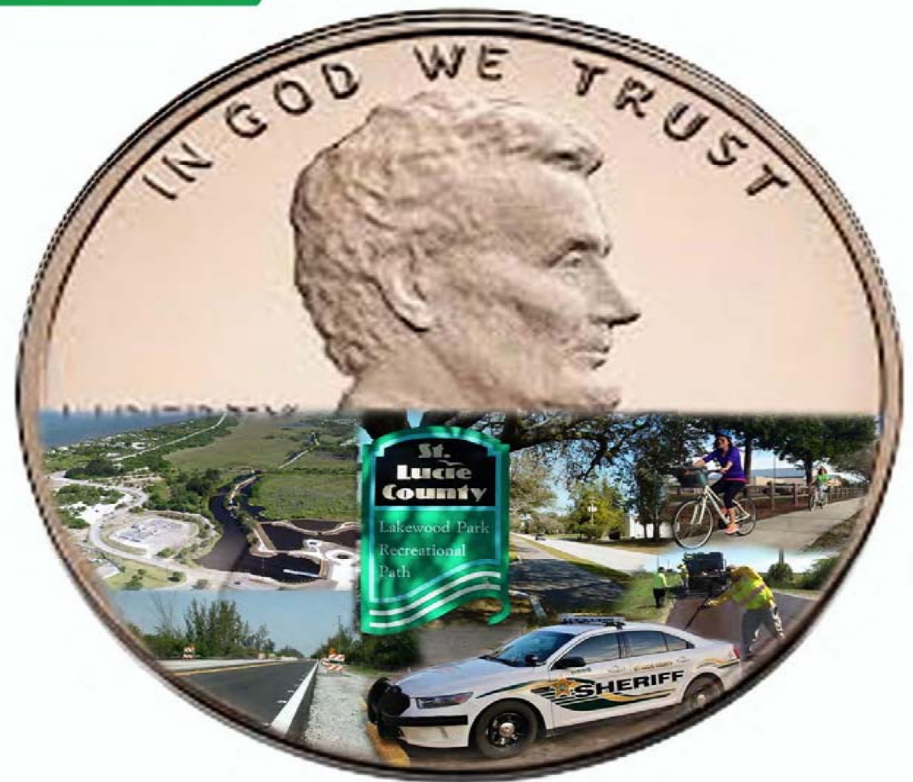
- Setting of Maximum Millage Rate – July 26, 2016
- 1<sup>st</sup> Budget Hearing September 8, 2016 at 6:00pm
- 2<sup>nd</sup> Budget Hearing September 22, 2016 at 6:00pm



**Board of County  
Commissioners  
Regular Meeting  
Tuesday, July 26, 2016**



**Fiscal Year 2017  
Recommended Budget**



**An Investment  
in Our Future**