

MEMORANDUM 23-12M

TO:

County Commissioners
County Administration
County Attorney
St Lucie County Road & Bridge Department
St. Lucie County Solid Waste Department
Fire Department
FPUA
Sherriff's Office
School Board
Postmaster
ART - Area Regional Transit
FDOT Ft. Pierce
Florida East Coast (FEC) Railroad
Public Safety

City of Fort Pierce

- City Engineer
- City Public Works Director
- Planning Department
- Police Department

City of Port St. Lucie

- City Engineer
- City Public Works Director
- Planning Department
- Police Department
- Utility Department

911
Media

FROM: Dan J. Zrallack, P.E., County Engineer

DATE: April 15, 2024

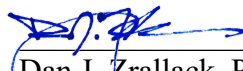
SUBJECT: Keen Road – Roadway (Bridge) Closure Notice

Keen Road will be closed to all through traffic between April 29, 2024, and March 17, 2025. This closure will be in place while the bridge at Taylor Creek is being replaced.

During this time, motorists heading north on Keen Road should detour west on Angle Road, north on Kings Highway & then east on St. Lucie Boulevard. Motorists heading south on Keen Road should detour west on St. Lucie Boulevard, south on Kings Highway & east on Angle Road.

Motorists in the area should follow directional signage to access properties affected by this closure. Please see the attached detour map.

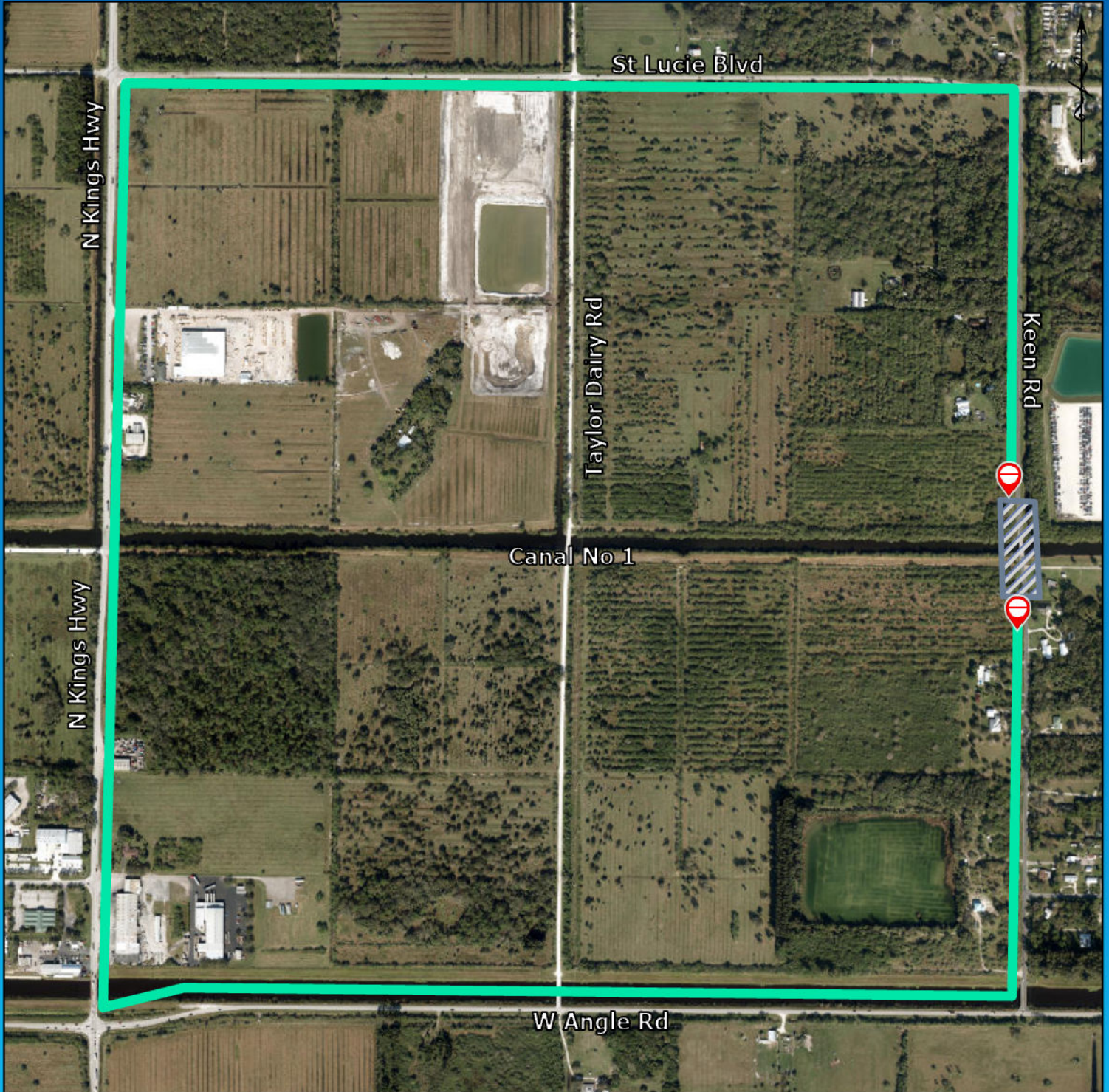
Should you need additional information, please contact the Public Works Engineering Division at 772-462-1707.



Dan J. Zrallack, P.E.
County Engineer

Keen Road - Bridge Replacement - Detour Map

Duration: 4/29/2024 - 3/17/2025*



Legend

-  Road Block
-  Road Work Area
-  Road Detours
- * Estimated Project Completion



Should you need additional information, please contact the Public Works Engineering Division at (772) 462-1707.