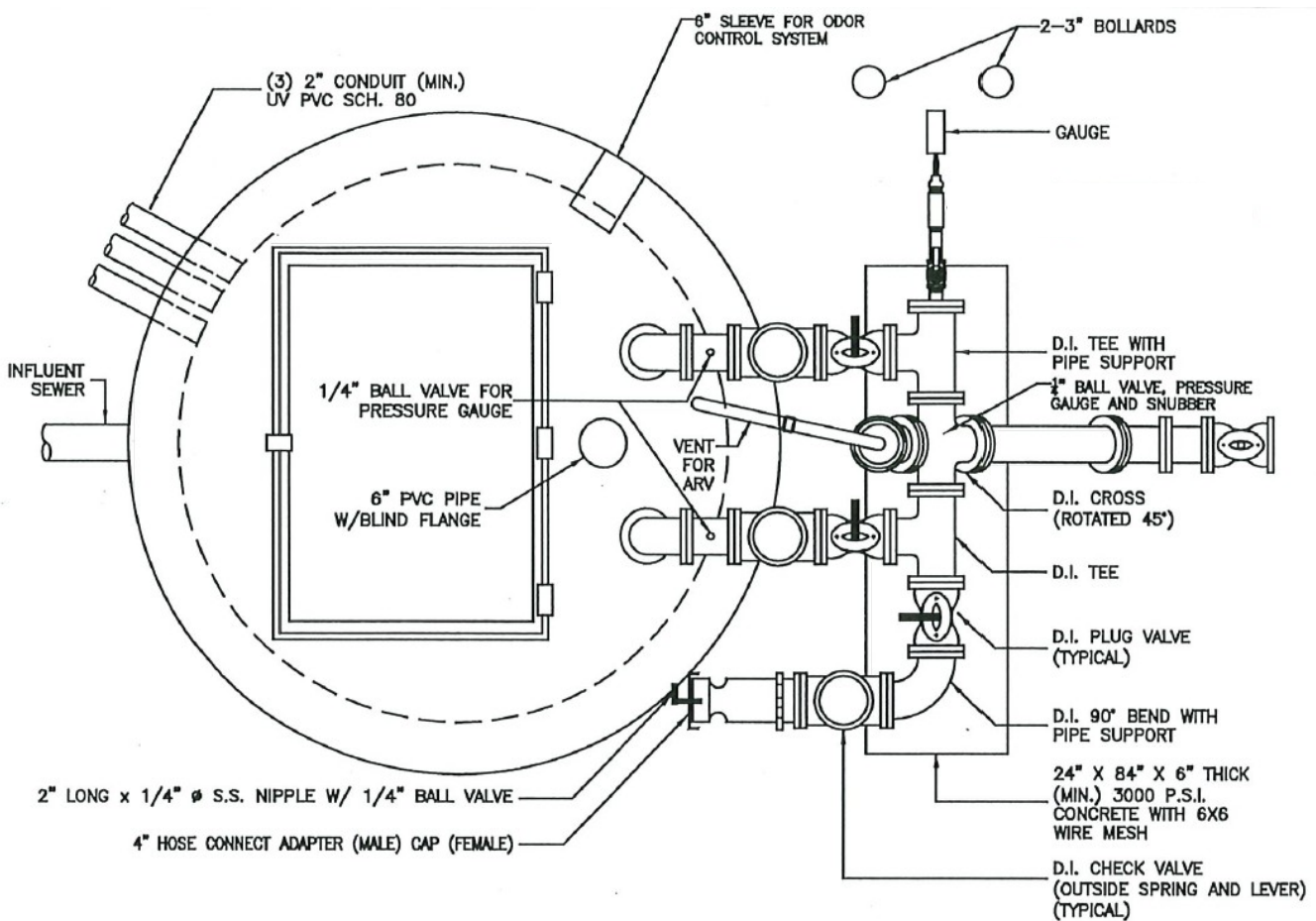


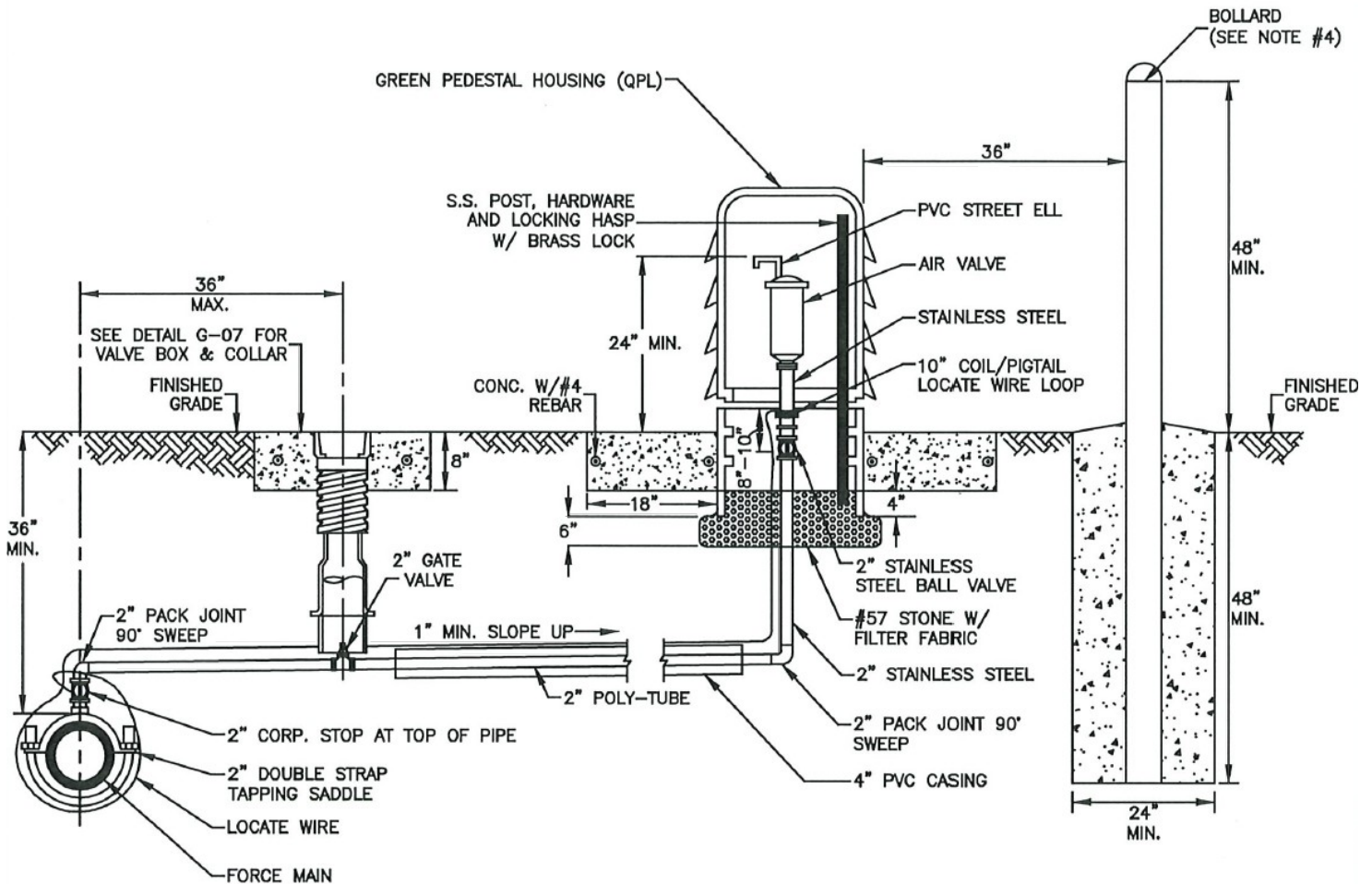
- NOTES:**
1. **THE DESIGN SPECIFICATIONS FOR THE WET WELL PUMPS, CONTROL ELEVATIONS AND DISCHARGE PIPING SHALL BE AS SPECIFIED BY THE ENGINEER-OF-RECORD, IN ACCORDANCE WITH SLCU UTILITY STANDARDS.**
 2. **WET WELL INTERIOR WALLS SHALL BE PROTECTED WITH A LINER. THE WET-WELL EXTERIOR SHALL BE COATED WITH A PRIMER AND 2 COATS OF WATER BASED EPOXY 3-5 MILS EACH; APPLICATION SHALL BE IN ACCORDANCE WITH THE MANUFACTURES SPECIFICATIONS.**
 3. **A FLOAT SHALL BE PROVIDED FOR ALARM AND TO CONTROL BACKUP RELAY SYSTEM FOR THE PUMPS.**
 4. **ALL OPENINGS FOR PIPES AND CONDUITS SHALL BE PRECAST. ALL JOINTS AND TOP SLAB SHALL BE SEALED WITH AN APPROVED SEALANT (SEE DETAIL). THE SPACE BETWEEN THE DISCHARGE PIPES AND THE TOP SLAB SHALL BE FILLED WITH WATERPROOF NON-SHRINKING GROUT.**
 5. **THE INFLUENT PIPE DETAIL SHOWN ABOVE IS FOR A GRAVITY SEWER. FOR FORCE MAINS FROM A LIFT STATION OR LOW PRESSURE SEWER SYSTEM, A TEE SHALL BE INSTALLED AS SHOWN WITH DASHED LINE.**
 6. **ONE PUMP SHALL BE EQUIPPED WITH A MIX-FLUSH VALVE.**
 7. **THE DISCHARGE PIPE SHALL BE SCH-40 STAINLESS STEEL OR DR-11 HDPE PIPE TO THE FLANGE ABOVE THE GROUND.**
 8. **ALL HARDWARE SHALL BE 316 STAINLESS STEEL AND ALL BOLTS AND NUTS SHALL BE 304 STAINLESS STEEL.**



**ST. LUCIE COUNTY
WATER & WASTEWATER
CONSTRUCTION
STANDARDS**

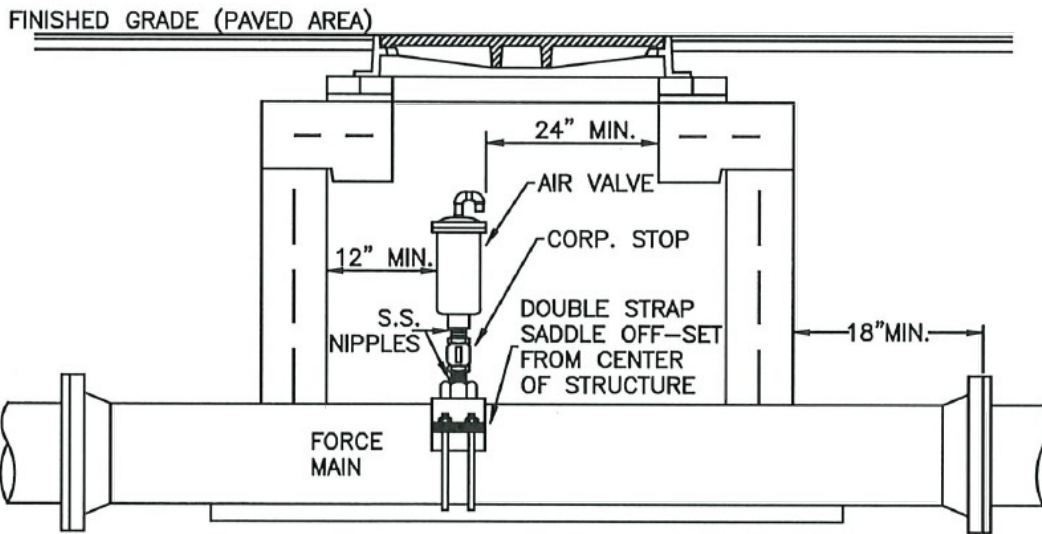
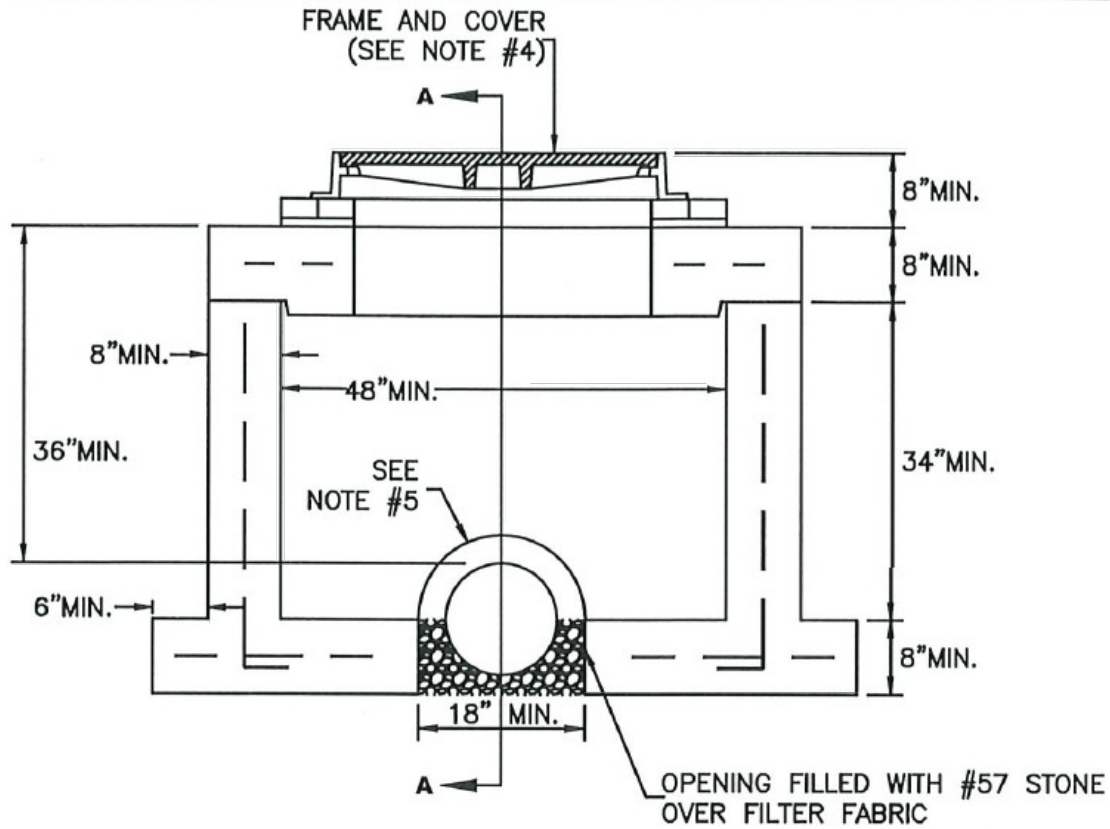
**LIFT STATION
WET WELL**





NOTES:

1. ALL AIR RELEASE VALVES SHALL BE INSTALLED IN ACCORDANCE WITH THIS DETAIL.
2. AIR VALVE, PIPING AND APPURTENANCES SHALL BE IN ACCORDANCE WITH SLCU UTILITY STANDARDS.
3. THE AIR VALVE SHALL BE SEIZED BY THE ENGINEER-OF-RECORD (EOR) BASED ON MANUFACTURER'S RECOMMENDATION. THE EOR SHALL CONSULT WITH SLCU REGARDING THE TYPE OF VALVE TO BE USED AND LOCATION.
4. BOLLARDS (4) ARE REQUIRED AROUND THE PEDESTAL HOUSING UNLESS APPROVED OTHERWISE BY SLCU. BOLLARD SHALL BE INSTALLED PER SLCU DETAIL.



NOTES:

1. THIS DETAIL CAN ONLY BE USED WHEN PRIOR APPROVAL HAS BEEN OBTAINED FROM SLCU IN WRITING.
2. AIR VALVE SHALL BE TYPE AND SIZE APPROPRIATE FOR SERVICE INTENDED. FORCE MAINS REQUIRE 2" MINIMUM.
3. THE ACCESS MANHOLE SHALL MEET THE SPECIFICATIONS OF THE UTILITY STANDARDS MANUAL AND CONFORM TO ASTM C-478.
4. A HINGED COVER AND FRAME SHALL BE PROVIDED FOR A MINIMUM OPENING OF 32". THE COVER SHALL NOT HAVE A GASKET, SO THAT AIR CAN EXIT THE MANHOLE AND SHALL BE MARKED "SEWER ARV".
5. A CLEARANCE OF 2" SHALL BE MAINTAINED BETWEEN THE FORCE MAIN AND THE MANHOLE. THERE SHALL BE NO PIPE JOINTS WITHIN THE MANHOLE.
6. A LARGER MANHOLE WILL BE REQUIRED FOR PIPES LARGER THAN 12":

| PIPE SIZE | MANHOLE DIAMETER |
|-----------|------------------|
| 16" - 24" | 60" |
| 30" - 42" | 72" |