

MEMORANDUM 24-23M

TO:

County Commissioners
County Administration
County Attorney
St Lucie County Road & Bridge Department
St. Lucie County Solid Waste Department
Fire Department
FPUA
Sherriff's Office
School Board
Postmaster
Community Transit
FDOT Ft. Pierce
Florida East Coast (FEC) Railroad
Public Safety

City of Fort Pierce

- City Engineer
- City Public Works Director
- Planning Department
- Police Department

City of Port St. Lucie

- City Engineer
- City Public Works Director
- Planning Department
- Police Department
- Utility Department

911
Media

FROM: Dan J. Zrallack, P.E., County Engineer

DATE: November 12, 2024

SUBJECT: Emergency Road Closure – Shinn Road (between Okeechobee Road and Orange Avenue)

Shinn Road, approximately 1.42 miles south of Orange Avenue and north of Fire Station 11, will be closed immediately and until further notice due to a failed culvert pipe beneath the roadway.

During this time, motorists heading north on Shinn Road should detour east on Okeechobee Road, then north on South Brocksmith Road, west on Orange Avenue, and south on Shinn Road. Motorists heading south on Shinn Road should detour east on Orange Avenue, south on South Brocksmith Road, then west on Okeechobee Road, and north on Shinn Road.

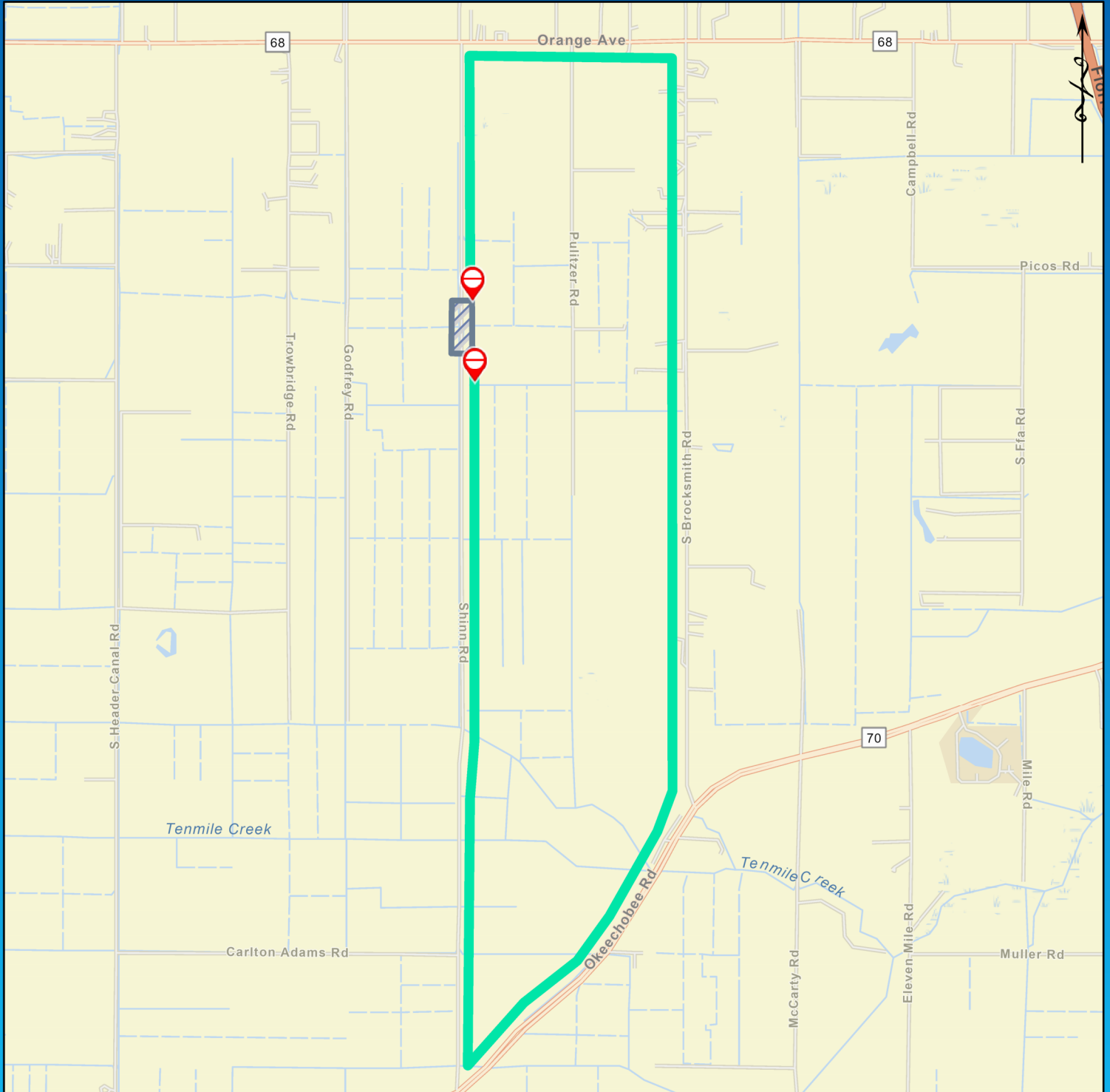
Should you need additional information, please contact the Public Works Engineering Division at 772-462-1707.






Dan J. Zrallack, P.E.
County Engineer

Shinn Road - Road Closure - Detour Map

Duration: November 12, 2024 - Until further notice



Legend

-  Road Block
-  Road Work Area
-  Road Detours



Should you need additional information, please contact the Public Works Engineering Division at (772) 462-1707.